

PRELIMINARY



168 kW



33.7 t



11 m



MAX CAB

730E

Mobile material handling machine

TIER IVf emission standards

730E Advanced. The E-Series.



1974: Timber handling machine with elevated cab

What makes up the E-Series

- 60 years of experience in designing and constructing hydraulic material handling machines
- Uncompromisingly high performance in all areas: focus on material handling
- Technology that can be mastered: high-quality components without over-engineering
- Long product service life and high value retention

Your top benefits:

- 1 Green Efficiency**
Save fuel – reduce operating costs
Work quietly – protect operator and environment
- 2 Peak performance**
Durable mechanical systems – stressed parts optimized
High speeds – high load capacities
- 3 Maximum operating comfort**
Comfortable Maxcab operator cab – relaxed work
SENCON – SENNEBOGEN Control System
- 4 Maximum safety**
Safe entry and exit – no-slip steps
State-of-the-art cameras – entire work area in view
- 5 Maintenance and service made easy**
Easy fault diagnosis – central reading points
Easy maintenance – clear labeling
- 6 Consultation and support**
3 production sites – 2 subsidiaries
120 sales partners – over 300 service stations





*Up to 25% depending on use compared to the D-Series

730E The timber handling machine

GREEN EFFICIENCY

Work	Idle		Stop
1800 ECO RPM	1400 RPM	800 RPM	0 RPM
0 s	5 s	8 s	5 min



Fully equipped standard

Powerful, automotive driving

- Robust undercarriage with powerful, quiet engine
- Can pull up to 25 t
- Maximum driving convenience with parking brake and automatic brake release
- Driver assist systems to automatically detect and switch direction of travel and direction of steering
- Top stability thanks to 8 tires

Small ballast - compact dimensions

- Low front and rear radius for optimal maneuverability, especially in tight spaces
- High safe working loads with low deadweight

Optimal power

- Powerful drives for high driving and handling performance, even for blended movements
- Large hydraulics and perfectly tuned cooling for ideal working conditions

Green Efficiency

- Complies with Emission Tier IV, DEF clean exhaust technology
- Economical thanks to EcoMode, automatic idle and automatic start-stop



Rear boom

Ideal weight distribution
thanks to middle center of gravity



Light counterweight
is more than enough



Less weight
for accelerating and braking



Less deadweight for driving
= save up to 20% more fuel

Perfect overview

- Stable cab height elevation up to 1.0 m or 1.5 m (option)
- Rear boom gives unobstructed view from cab
- Right and rearview cameras

Maximum safety

- Robust, all-round protective grating for cab
- Safe access to cab and uppercarriage thanks to stable grip handles and no-slip surfaces
- Sliding door for convenience and safety
- Stable railing on uppercarriage

730E The E-Series. Pure comfort.

Maxcab comfort cab

- Air-suspension comfort seat with heater
- Convenient joystick control
- Joystick in seat bracket, moves with seat
- Sliding door, platform in front of cab
- Color monitor for right-side and rear-facing camera feeds
- SENNEBOGEN OptiMode: Various modes to optimize performance



Driver comfort

- No-slip access ladders for safely accessing the machine
- Sliding door makes entering and exiting easy and safe
- Pleasant work environment thanks to low noise emissions



Automatic climate control

- Consistently pleasant cab climate thanks to 10 evenly distributed air vents
- Central controls make operation easy



SENCAN

- Clear menu
- Determine operating values without the need for additional instruments
- Fast troubleshooting thanks to detailed messages

730E Maintenance and service made easy



Optimized for maintenance

- Fast and easy troubleshooting thanks to straightforward and clearly labeled electrical distributor
- Easy access to all service points on the machine
- Automatic central lubrication for equipment and slewing gear raceway



HydroClean*

- Optimal protection of hydraulic components thanks to 3 µm micro-filter
- Cleaner hydraulic oil, longer service life



Central reading points

- Easily accessible, central reading points
- Quickly inspect entire hydraulic system



Clear labeling

- All parts labeled with a unique part number
- Easy and reliable spare parts ordering

* Optional

730E Technical data, equipment

MACHINE TYPE

Model (type) **730**

ENGINE

Power	164 kW / 223 hp at 2,000 rpm TIER IIIa emission standard 168kW / 228 hp at 2,000 rpm TIER IVf emission standard
Model	Cummins QSB 6.7 – C220 TIER IIIa/IVf Direct injection, turbo-charged, charge air cooler, reduced emissions, Eco Mode, automatic idle, automatic stop
Cooling	Water-cooled, cooler fan reversal
Diesel filter	With water separator and heating system
Air filter	Dry filter with integrated pre-separator, automatic dust discharge, main element and safety element, contamination indicator
Fuel tank	460 l
Electrical system	24 V
Batteries	2x 150 Ah cold-start high-performance batteries
Options	<ul style="list-style-type: none"> ■ Engine block heater ■ Electric fuel pump ■ Jump-start terminals

UPPERCARRIAGE

Design	Torsion-resistant box design, precision crafted, steel bushings for boom brackets Extremely service-friendly design, longitudinal engine
Central lubrication	Automatic central lubrication for equipment and slewing gear raceway
Electrical system	Central electrical distributor, battery disconnect switch
Cooling system	3-circuit cooling system with high cooling output, thermostatically regulated fan drive for oil cooler and water cooler, fan reversal for cleaning
Safety	Right and rear cameras, emergency control of main functions
Options	<ul style="list-style-type: none"> ■ Slewing gear brake via foot pedal ■ LED lighting package ■ Fire extinguisher ■ Electric heater for hydraulic tank ■ Low temperature package ■ 360° uppercarriage railing

HYDRAULIC SYSTEM

Load sensing/LUDV hydraulic system, hydraulic pilot-controlled work functions, load limit sensing control	
Pump type	Swashplate-type variable-displacement piston pump, load pressure-independent flow distribution for simultaneous, independent control of work functions
Pump control	Zero-stroke control, on-demand flow control – the pumps only pump as much oil as will actually be used, pressure purging, load limit sensing control
Operating pressure	max. 350 bar
Filtration	High-performance filtration with long change interval
Hydraulic tank	390 l
Control system	Proportional, precision hydraulic actuation of work movements, 2 hydraulic servo joysticks for the work functions, additional functions via switches and foot pedals
Safety	Hydraulic circuits with safety valves, secured emergency lowering of the equipment at engine standstill
Options	<ul style="list-style-type: none"> ■ 3 µm hydraulic micro-filter - SENNEBOGEN HydroClean ■ Bio-oil – environmentally friendly ■ ToolControl for programming pressure/rate for up to 10 tools

SLEWING DRIVE

Gearbox	Compact planetary gear with slant-axis hydraulic motor, integrated brake valves
Parking brake	Spring-loaded multi-disk brake
Slewing ring	External gear slewing ring with 360° protection and pinion gear lubrication
Slewing speed	0-7 rpm, variable

730E Technical data, equipment

CAB MAX CAB

Cab type	Rigid cab height elevation 1 m
Cab equipment	Sliding door, excellent ergonomics, automatic climate control, heated, air-suspension comfort seat, fresh/circulating air filter, joystick control, 12 V/24 V connections, SENCON V2
Cab protection	Strong, all-round protective grating for cab
Options	<ul style="list-style-type: none"> ■ Rigid cab height elevation 1.50 m ■ Auxiliary heating system with timer ■ Active-charcoal outside air filter for cab, ideal for waste recycling ■ Steering wheel with adjustable steering column ■ Sliding window in operator door ■ Armored glass windshield, additional safety ■ Armored glass roof window, additional safety ■ Safety side window and rear window ■ Rolling shade for roof window and windshield ■ Radio and CD player with speakers ■ Hydraulic folding rigid cab elevation ■ Platform next to cab

ATTACHMENTS

Design	Decades of experience, state-of-the-art computer simulation, highest level of stability, longest service life, large-dimensioned and low-maintenance bearing points, sealed special bearing bushes, precision-crafted, quick-release couplings on the connections - open/close/rotate grapple
Cylinders	Hydraulic cylinders with high-quality sealing and guide elements, end position damping, sealed bearing points, pipe fracture safety valves for the hoist and stick cylinders
Options	<ul style="list-style-type: none"> ■ Ball valves on the hydraulic lines Open, close, rotate grapple ■ Maritime climate varnishing ■ Maritime climate coating of all cylinders, nickel-plated and chrome-plated ■ Float position of the equipment ■ Hoisting limiter / stick limitation adjustable for stop settings, e.g. in the hall

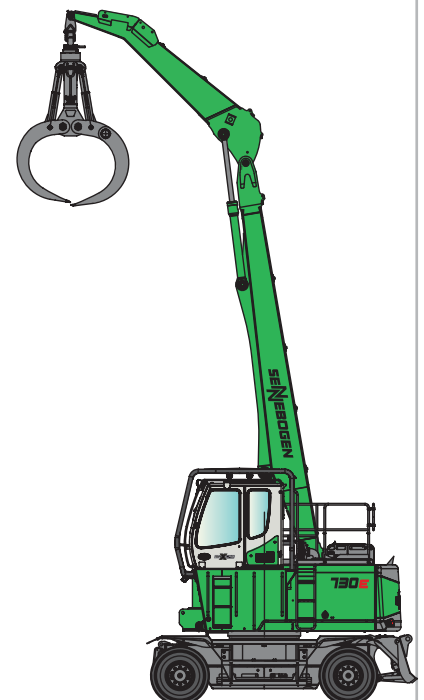
UNDERCARRIAGE

Design	Stable welded construction in box design, Type MF36E
Drive	All-wheel drive powered by a variable-displacement hydraulic motor with direct-mounted, automatically actuated brake valve and 2-stage power shift transmission Planetary axles with integrated steering cylinders, disk service brake in 2-circuit system, automatic central lubrication, steering direction reversal, direction of travel reversal, travel drive protection
Parking brake	Spring-loaded multi-disk brake
Tires	12.00-20, 8x
Speed	0-20 kph variable
Options	<ul style="list-style-type: none"> ■ Preparation for trailer hitch ■ Rear shovel plate ■ Fenders

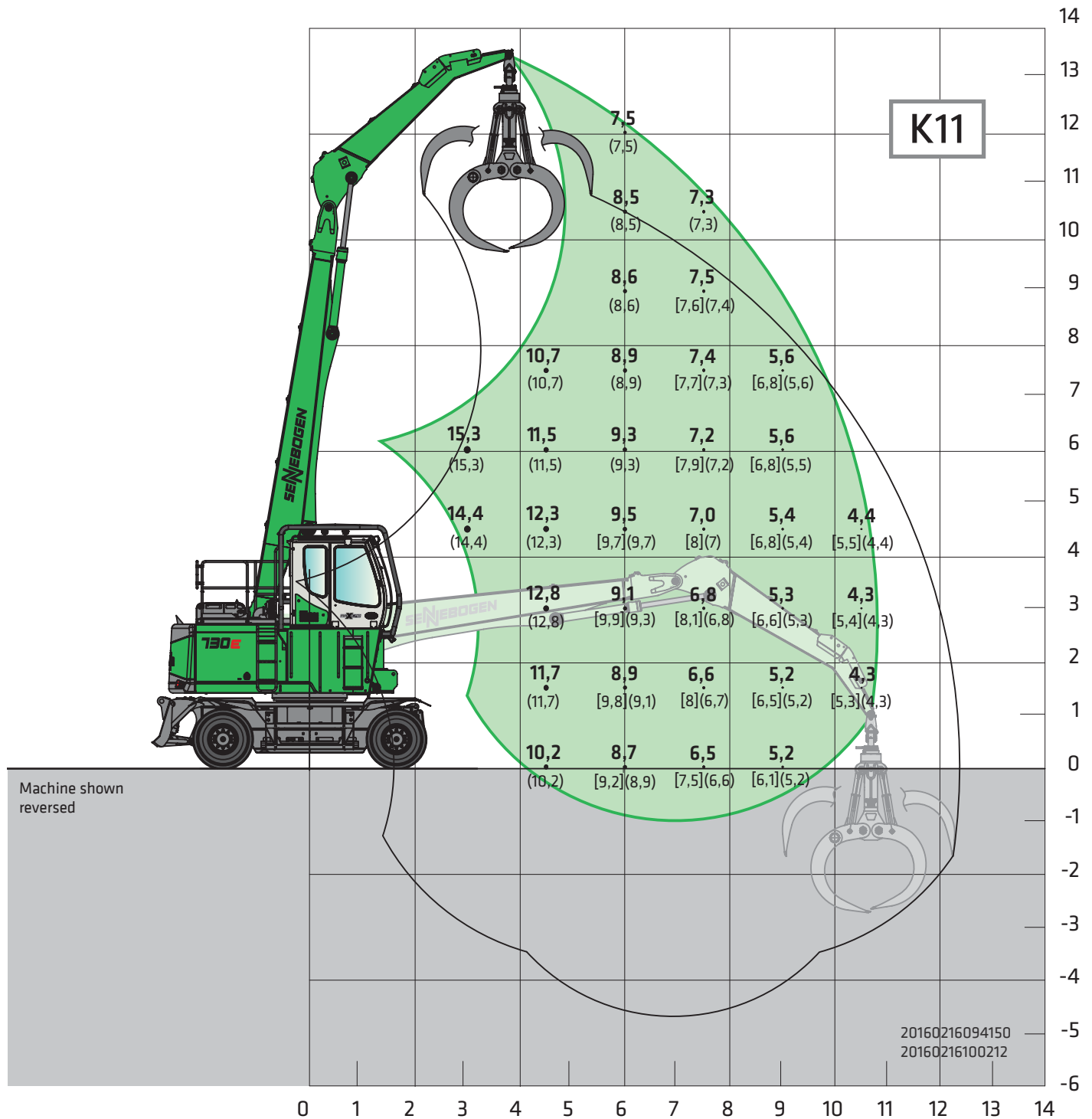
OPERATING WEIGHT

Mass	Approx. 34,100 kg Basic machine 730 M with dozer blade, incl 2.0 m ² grapple
------	--

Notice Operating weight varies by model.



730E Load ratings



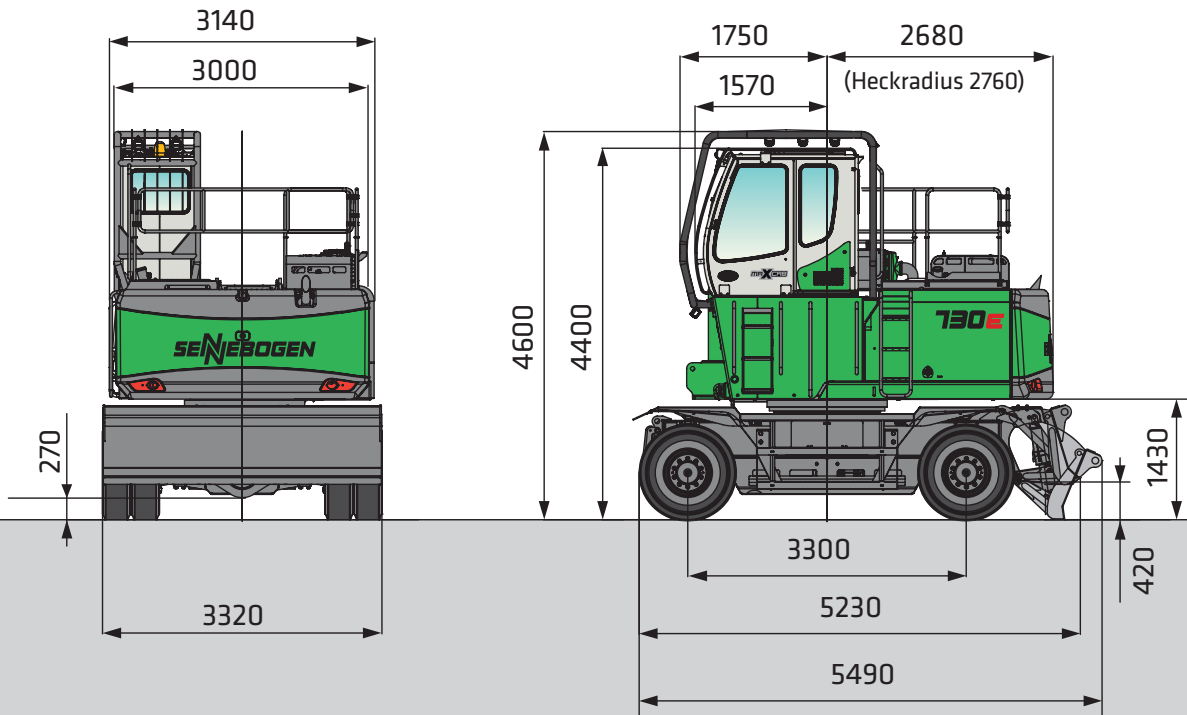
Machine shown reversed

20160216094150
20160216100212

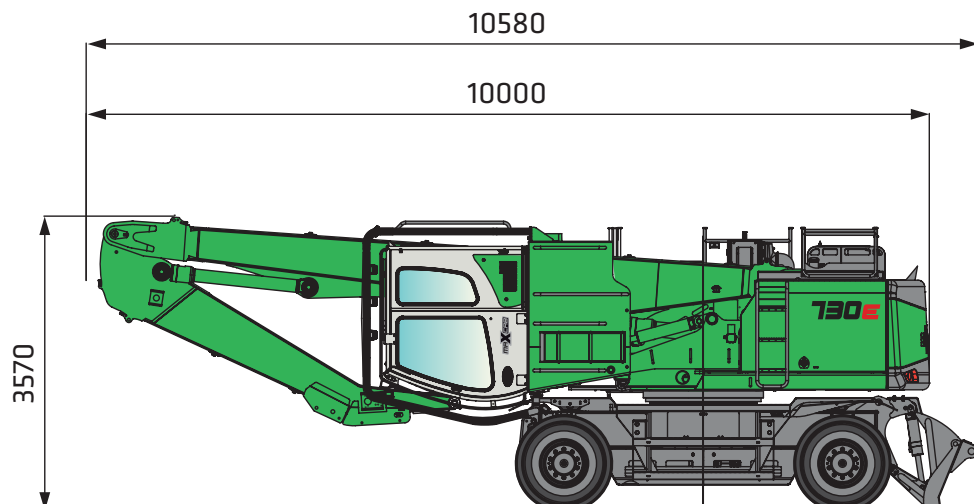
Undercarriage MF36E Compact boom 8.0 m Cab Maxcab, 1 m rigid elevation
Dipper stick 4.5 m

All load ratings are specified in tons (t) and apply at the end of the stick, without attachment, on a load-bearing, solid and level ground. Attachments such as grapple, load hook, et cetera are part of the specified load ratings. The specified values apply to stationary operation at a work range of 360°, on wheels without outrigger support and with blocked pendulum axle. The values in square brackets [] apply to stationary operation at an uppercarriage position longitudinal to the undercarriage, on wheels, without outrigger support, and with blocked pendulum axle. In accordance with ISO 10567, these values represent 75% of the static tipping load or 87% of the hydraulic lifting force. The values in parentheses () apply to mobile operation at an uppercarriage position longitudinal to the undercarriage, on wheels, and activated pendulum axle. In accordance with DIN EN 474-5 these values represent 60% of the static tipping load. If the machine is operated in stationary mode in hoist implementation, then in accordance with DIN EN 474-5, the machine must be equipped with pipe fracture safety devices on the hoist cylinders of the boom and an overload warning device.

730E Dimensions



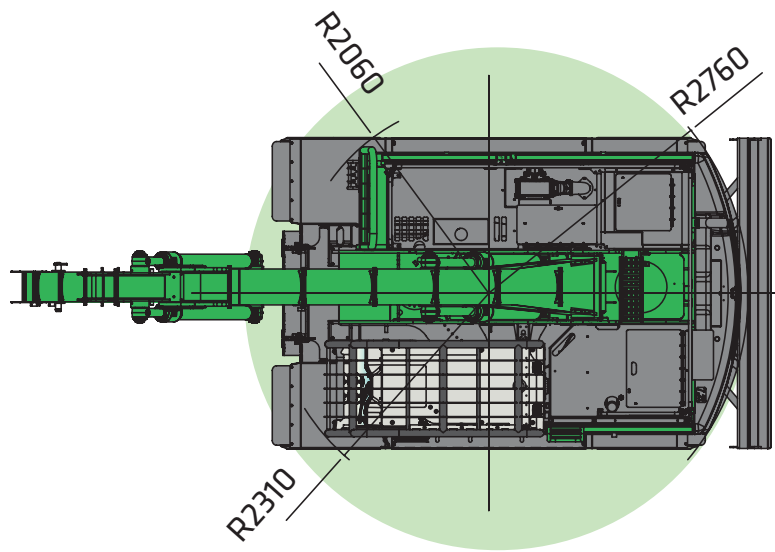
730 M with 1 m rigid forward-folding cab, undercarriage type MF36E



* Remove front left fender (option) for transport

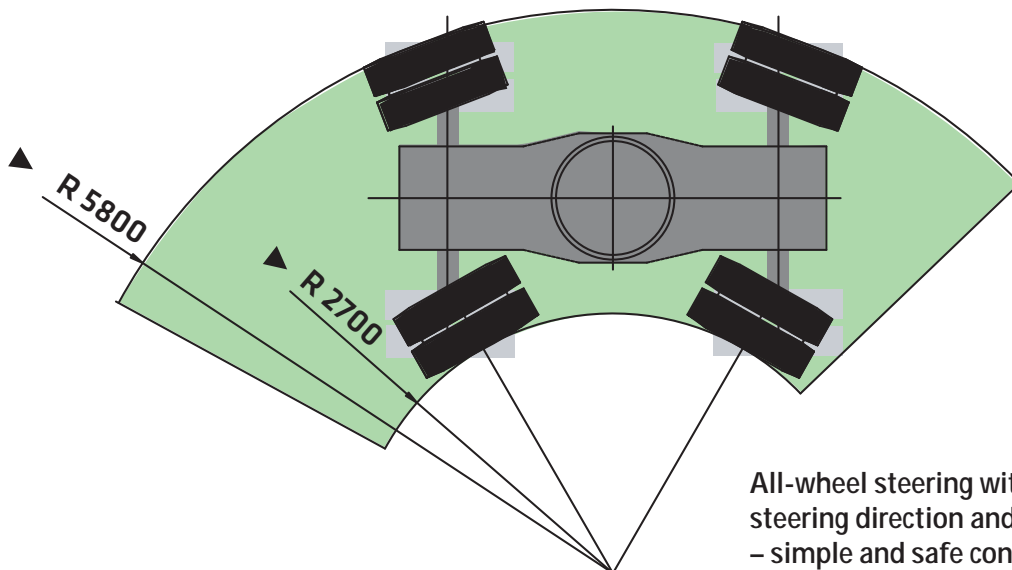
730 M transport dimensions

730E Dimensions



Extremely compact dimension for storage space and less traffic area. Compact uppercarriage dimensions for use in tight spaces. Space-saving, optimal maneuverability and safety.

730 M swivel radii



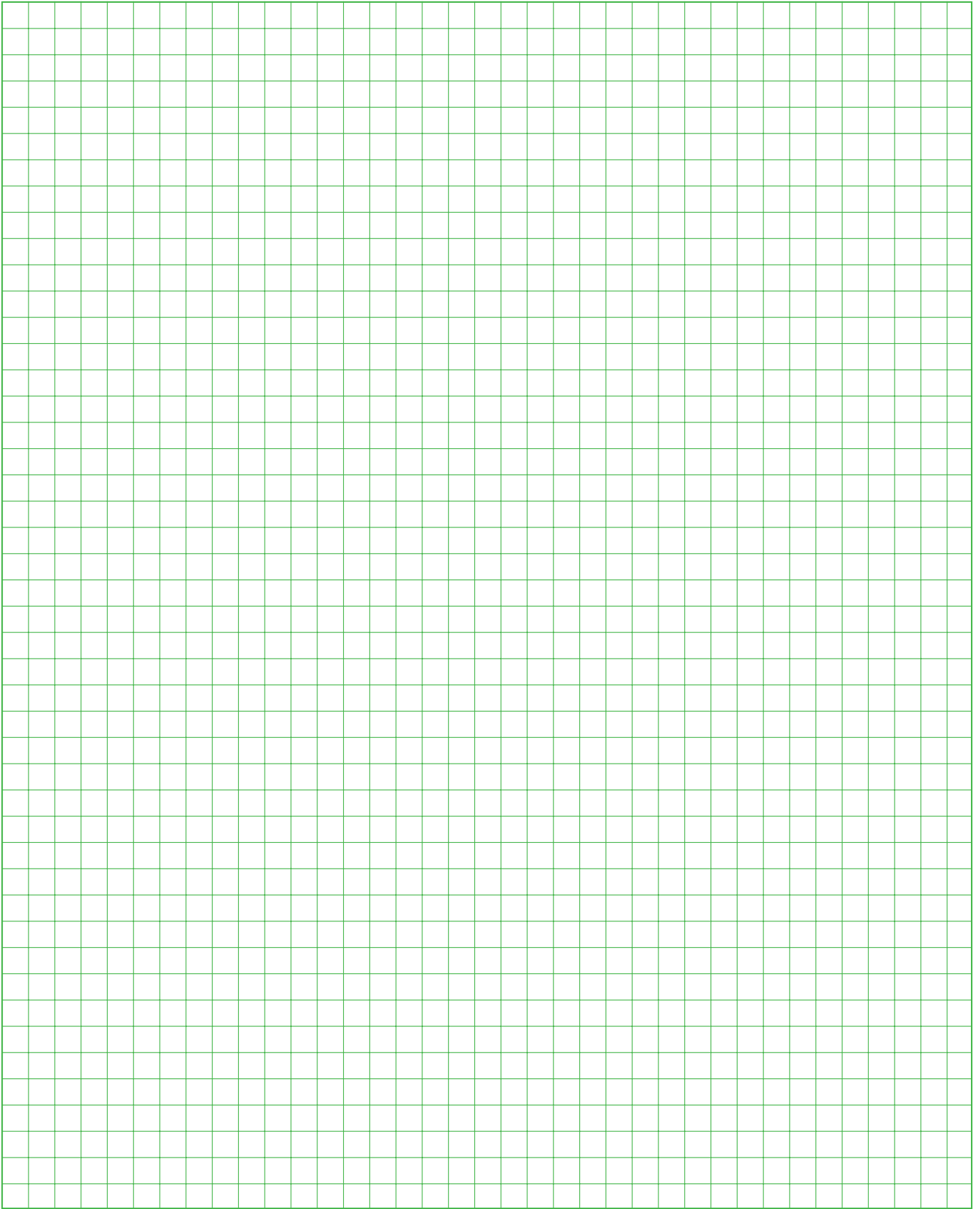
730 M turning radius

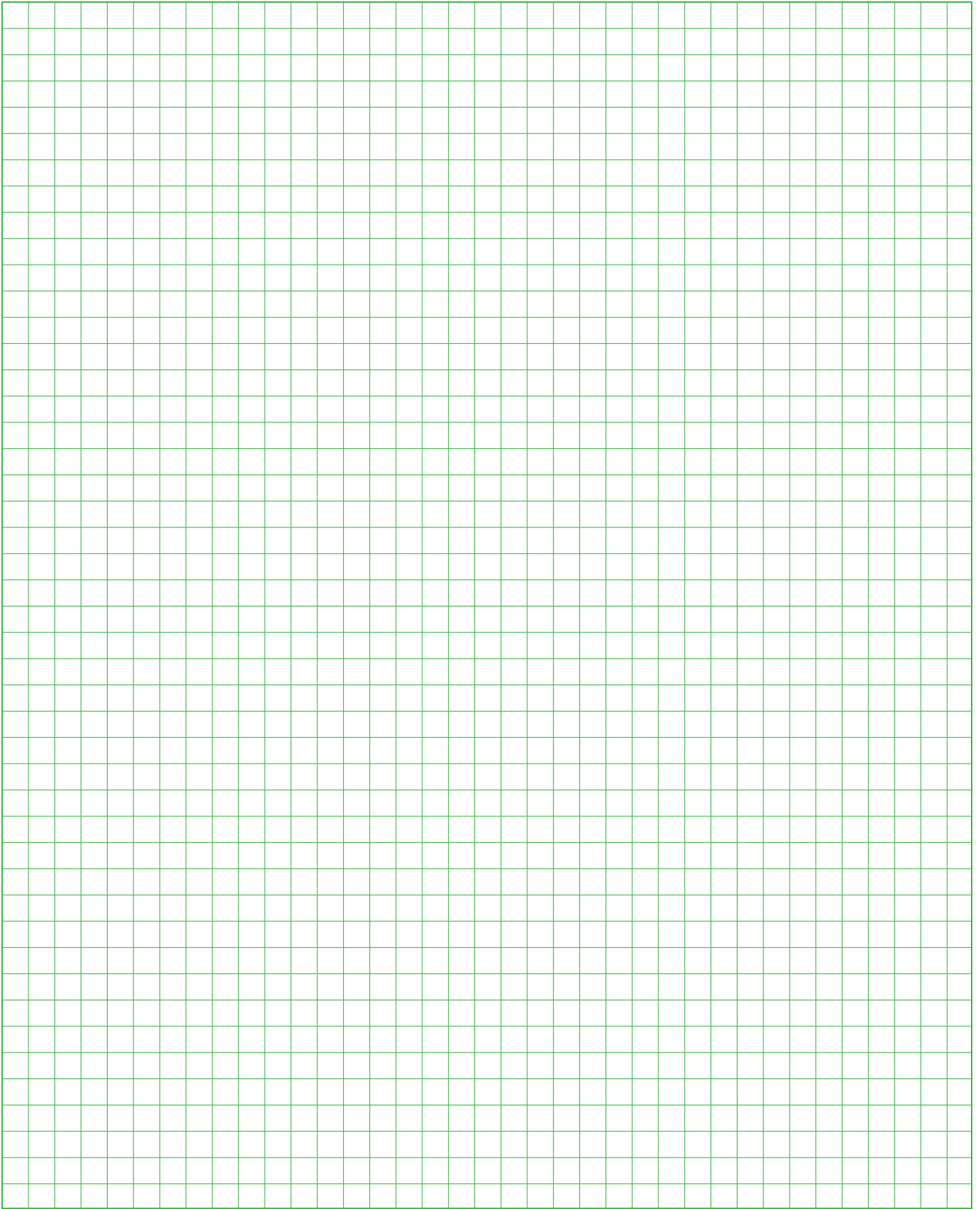
All-wheel steering with reversal of steering direction and travel direction – simple and safe control for maximum efficiency.

730E

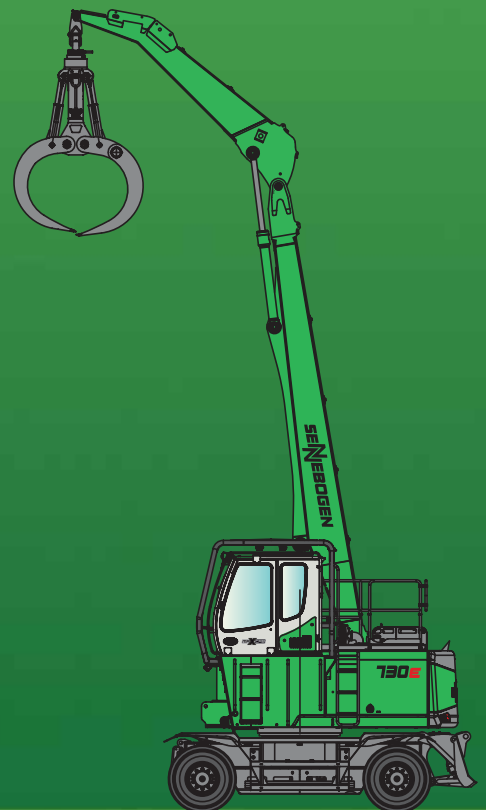


730E Notes





730E



This catalog describes machine models, scopes of equipment of individual models, and configuration options (standard equipment and optional equipment) of the machines delivered by SENNEBOGEN Maschinenfabrik. Machine illustrations can contain optional equipment and supplemental equipment. Actual equipment may vary depending on the country to which the machines are delivered, especially in regard to standard and optional equipment.

All product designations used may be trademarks of SENNEBOGEN Maschinenfabrik GmbH or other supplying companies, and any use by third parties for their own purposes may violate the rights of the owners.

Please contact your local SENNEBOGEN sales partner for information concerning the equipment variants offered. Requested performance characteristics are only binding if they are expressly stipulated upon conclusion of the contract. Delivery options and technical features are subject to change. Errors and omissions excepted. Equipment is subject to change, and rights of advancement are reserved.

© SENNEBOGEN Maschinenfabrik GmbH, Straubing/Germany. Reproduction in whole or in part only with written consent of SENNEBOGEN Maschinenfabrik GmbH, Straubing, Germany.

The Sennebogen logo, consisting of the word 'SENNEBOGEN' in a bold, stylized, sans-serif font. The letters are white with a blue outline and are set against a dark blue rectangular background.

SENNEBOGEN
Maschinenfabrik GmbH

Sennebogenstraße 10
94315 Straubing, Germany

Tel. +49 9421 540-144/146
Fax +49 9421 43 882
marketing@sennebogen.de

Order no. 195273
730M-195273

GO FOR GREEN

www.sennebogen.com