

SENEBOGEN



 224 kW

 43.9 t

 11.3 m

 MAX CAB

735E

Mobile material handling machine

TIER IVf emission standards

735E Advanced. The E-Series.



1974: Timber handling machine with elevated cab

The characteristics of the E-Series

- 60 years of experience in the design and construction of hydraulic material handling machines
- Uncompromising high-performance in all areas: Focus on material handling
- Technology that can be mastered: High-quality components and avoidance of over-engineering
- Long product service life and high value retention

Your most important advantages:

1 Green Efficiency
Save fuel - lower operating costs
Quiet work - easy on the operator and on the environment



2 Performance at the highest level
Robust mechanical engineering - stressed parts optimized
High speeds - high safe working loads

3 Maximum operating comfort
Maxcab comfort cab - relaxed work
SENCON - SENNEBOGEN Control System



4 Maximum safety
Safe entry and exit - non-slip step surfaces
Modern cameras - the entire work area is in view

5 Maintenance and service made easy
Easy fault diagnosis - central measuring points
Easy maintenance - clear labelling

6 Consultation and support
3 production locations - 2 subsidiaries
120 sales partners - more than 300 service support points








More performance, nevertheless:

- 25% Fuel consumption*
- 90% Nitrogen oxides / Level IV
- 90% Soot particles / Level IV

*Up to 25% depending on work use as compared to the D-Series

735E The timber handling machine

GREEN EFFICIENCY

Work	Idle		Stop
			
1800 ECO RPM	1400 RPM	800 RPM	0 RPM
0 s	5 s	8 s	5 min



Fully equipped standard

Optimal performance

- Powerful drives for high driving and handling performance, even for blended movements
- Large hydraulics and perfectly tuned cooling for ideal working conditions

Small ballast - compact dimensions

- Low front and rear radius for optimal maneuverability, especially in tight spaces
- High safe working loads with low deadweight

Powerful, automotive driving

- Robust undercarriage with 2 powerful, quiet travel motors
- Can pull up to 30 t
- Maximum driving convenience with parking brake and automatic brake release
- Driver assist systems to automatically detect and switch direction of travel and direction of steering
- Top stability thanks to 8 tires





Rear boom

Ideal weight distribution thanks to middle center of gravity



Low counterweight is more than enough



Less weight for accelerating and braking



Less deadweight for driving
= save up to 20% more fuel

Perfect overview

- Stable cab height elevation up to 1.0 m or 1.5 m (option)
- Rear boom gives unobstructed view from cab
- Right and rearview cameras

Maximum safety

- Robust, all-round protective grating for cab
- Safe access to cab and uppercarriage thanks to stable grip handles and no-slip surfaces
- Sliding door for convenience and safety
- Stable railing on uppercarriage

Green Efficiency

- Complies with Emission Standard IV, DEF clean exhaust technology
- Economical thanks to EcoMode, automatic idle and automatic start-stop

735E The E-Series. Pure comfort.

Maxcab comfort cab

- Air-suspension comfort seat with heater
- Convenient joystick control
- Sliding door, platform in front of cab
- Color monitor for right side and rear-facing camera feeds
- SENNEBOGEN OptiMode: Various modes to optimize performance



Driver comfort

- No-slip access ladders for safely accessing the machine
- Sliding door makes entering and exiting easy and safe
- Pleasant work environment thanks to low noise emissions



Automatic climate control

- Consistently pleasant cab climate thanks to 10 evenly distributed air vents
- Central controls make operation easy



SENCAN

- Clear menu
- Determine operating values without the need for additional instruments
- Fast troubleshooting thanks to detailed messages

735E Maintenance and service made easy



Optimized for maintenance

- Fast and easy troubleshooting thanks to straightforward and clearly labeled electrical distributor
- Easy access to all service points on the machine
- Automatic central lubrication for equipment and slewing gear raceway



HydroClean*

- Optimal protection of hydraulic components thanks to 3 µm micro-filter
- Cleaner hydraulic oil, extended oil service life



Central measuring points

- Easily accessible, central reading points
- Quickly inspect entire hydraulic system



Clear labeling

- All parts labeled with a unique part number
- Easy and reliable spare parts ordering

* Optional

735E Technical data - equipment

MACHINE TYPE

Model (type) **735**

ENGINE

Power **224 kW / 300 hp at 2000 rpm**
228 kW / 305 hp at 2000 rpm (Tier IIIa)

Model **Cummins QSL 9-C300 Level IV**
Direct injection, turbo charged, charge air cooler, reduced emissions, Eco Mode, idle automation, stop automation, fuel pre-warming

Cooling Water-cooled, cooler fan reversal

Diesel filter With water separator and heating system

Air filter Dry filter with integrated pre-separator, automatic dust discharge, main element and safety element, contamination indicator

Fuel tank **560 l**

DEF tank **30 l**

Electr. system **24 V**

Batteries **2 x 150 Ah**, battery disconnect switch

Options

- Engine block pre-warming
- Electr. fuel pump
- Jump-start terminals

UPPERCARRIAGE

Design Torsion-resistant box design, precision crafted, steel bushings for boom bearing arrangement

Extremely service-friendly concept, engine installed in the longitudinal direction

Central lubrication Automatic central lubrication for equipment and slewing gear raceway

Electrical Central electrical distributor, battery disconnect switch

Cooling system 3-circuit cooling system with high cooling output, thermostatically regulated fan drive for oil cooler and water cooler, fan reversal for cleaning

Safety

- Perimeter uppercarriage railing
- Emergency control of main functions

Options

- Slewing gear brake via foot pedal
- Light package with LEDs
- Fire extinguisher
- Electrical hydraulic tank pre-warming
- Low-temperature package

HYDRAULIC SYSTEM

Load sensing / LUDV hydraulic system, hydraulic, pilot-controlled work functions, load limit sensing control

Pump type Variable-displacement piston pump in swash-plate design, load pressure-independent flow distribution for simultaneous, independent control of work functions

Pump control Zero-stroke control, on-demand flow-control - the pumps only pump as much oil as will actually be used, pressure purging, load limit sensing control

Delivery rate **maximum 740 l/min**

Operating pressure **to 350 bar**

Filtration High-performance filtration with long change interval

Hydraulic tank **390 l**

Control system Proportional, precision hydraulic activation of work movements, 2 hydraulic servo joysticks for work functions, supplemental functions via switches and foot pedals

Safety Hydraulic circuits with safety valves, secured emergency lowering of the equipment at engine standstill

Options

- Bio-oil filling - ecologically worthwhile
- Tool Control for programming up to 10 tools in pressure / rate
- 3 µm hydraulic micro-filter - SENNEBOGEN HydroClean

SLEWING DRIVE

Gearbox Compact planetary gear with slant axis hydraulic motor, integrated brake valves

Parking brake Spring-loaded disk brake

Slewing ring External gear slewing ring with 360° protection and pinion tooth lubrication

Slewing speed 0-7 rpm, variable

735E Technical data - equipment

CAB **MAX**CAB

Cab type	Rigid cab height elevation 1 m
Cab equipment	Sliding door, excellent ergonomics, climate automation, seat heater, air-suspension comfort seat, fresh air filter / circulating air filter, joystick steering, 12 V / 24 V connections, SENCON
Options	<ul style="list-style-type: none"> ■ Rigid cab height elevation 1.50 m ■ Auxiliary heating system with timer ■ Cab active-charcoal filter inside air/outside air, ideal for waste recycling applications ■ Steering wheel steering with adjustable steering column ■ Sliding window in the operator door ■ Armored glass windshield, additional safety ■ Armored glass roof window, additional safety ■ Safety side window and rear window ■ Sunblind for roof window and windshield ■ Radio with speakers ■ Hydraulic folding rigid cab elevation ■ Platform next to cab ■ Active seat climatisation

ATTACHMENTS

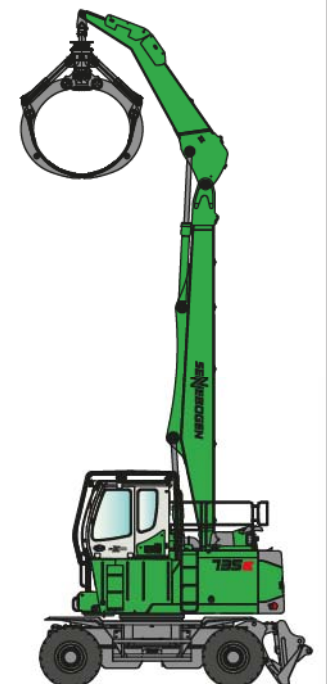
Design	Decades of experience, state-of-the-art computer simulation, highest level of stability, longest service life, large-dimensioned and low-maintenance bearing points, sealed special bearing bushes, precision-crafted, quick-release couplings on the connections - open/close/rotate grapple
Cylinders	Hydraulic cylinders with high-quality sealing and guide elements, end position damping, sealed bearing points, pipe fracture safety valves for the hoist and stick cylinders
Options	<ul style="list-style-type: none"> ■ Ball valves on the hydraulic lines

UNDERCARRIAGE

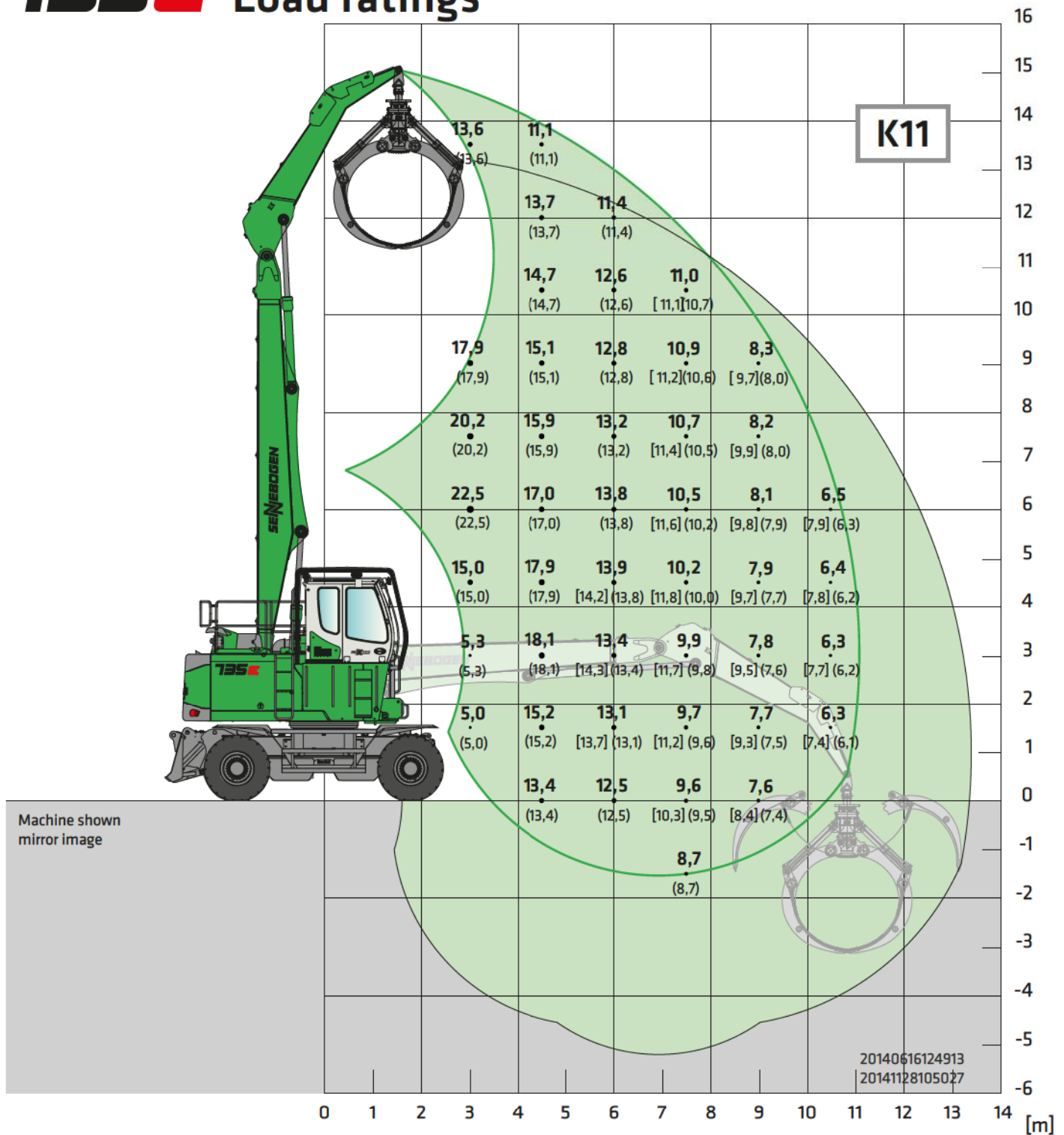
Design	Stable welded construction in box design, type MF37E
Drive	All-wheel drive powered by a variable-displacement hydraulic motor with direct-mounted, automatically actuated brake valve and 2-stage power shift transmission Planetary axles with integrated steering cylinders, service brake in 2-circuit system, automatic central lubrication, steering direction reversal, direction of travel reversal, Protection for travel drive
Parking brake	Spring-loaded disk brake
Tires	14.00-24, 8x
Speed	0-20 km/h variable
Options	<ul style="list-style-type: none"> ■ Preparation for trailer hitch ■ Rear shovel plate ■ Fenders

OPERATING WEIGHT

Mass	Approximately 43,900 kg basic machine 735 M with dozer blade, incl. 3 m ² grapple
Note	The operating weight varies depending on the model.



735E Load ratings



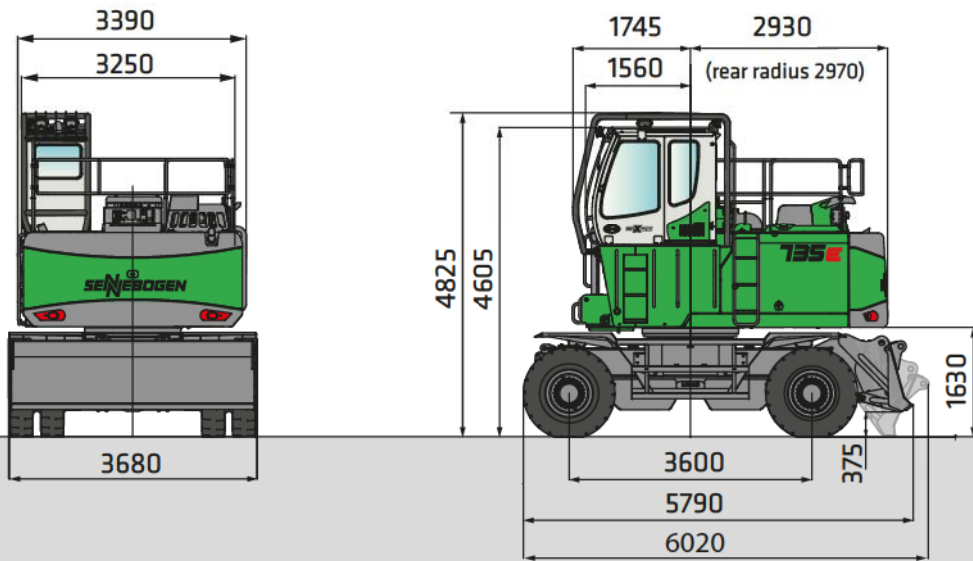
Undercarriage	MF37	Compact boom	8.2 m	Cab	Maxcab, 1 m rigid elevation
		Dipper stick	4.7 m		

All load ratings are specified in tons (t) and apply at the end of the stick, without attachment, on a load-bearing, solid and level substrate. Attachments such as grapple, load hook, et cetera are part of the specified load ratings. The specified values apply to stationary implementation at a work range of 360°, on wheels without outrigger support and with blocked pendulum axle. The values in square brackets [] apply to stationary implementation at an uppercarriage position longitudinal to the undercarriage, on wheels, without outrigger support, and with blocked pendulum axle. In accordance with ISO 10567, they are 75% of the static tipping load or 87% of the hydraulic lifting force. The values in parentheses () apply to mobile implementation at an uppercarriage position longitudinal to the undercarriage, on wheels, and activated pendulum axle. In accordance with DIN EN 474-5 they are 60% of the static tipping load. If the machine is operated in stationary mode in hoist implementation, then in accordance with DIN EN 474-5, the machine must be equipped with pipe fracture safety devices on the hoist cylinders of the boom and an overload warning device.

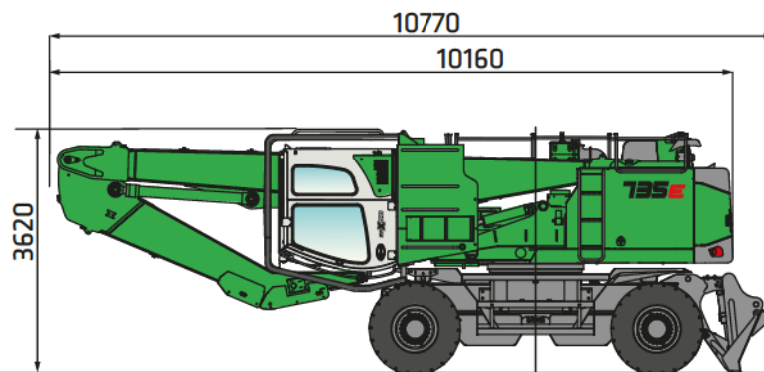


735E Dimensions

Transport width 3680 mm

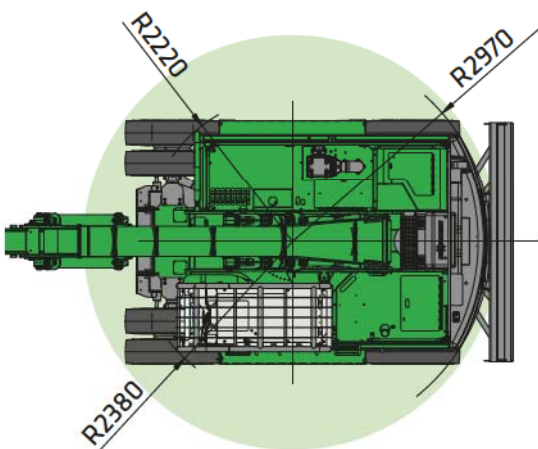


735 MHD with 1 m rigid forward-folding cab, undercarriage type MF37

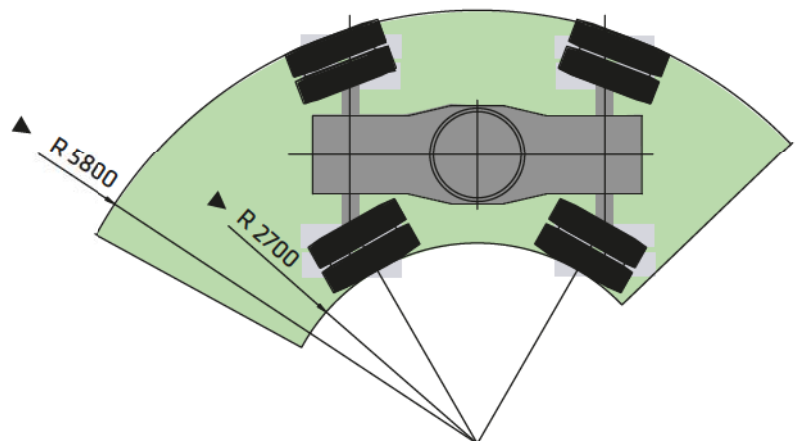


* Remove front left fender (option) for transport

735 MHD transport dimensions



730 M Slewing radius



730 M Turning radius

735E



This catalog describes machine models, the scope of equipment of individual models, and configuration possibilities (standard equipment and optional equipment) of the machines delivered by SENNEBOGEN Maschinenfabrik. Machine illustrations can contain optional equipment and supplemental equipment. Depending on the country in which the machines are delivered, deviations from the equipment are possible, particularly with regard to standard equipment and optional equipment.

All product designations used can be trademarks of SENNEBOGEN Maschinenfabrik GmbH or trademarks of other supplying companies; the use of these trademarks by third parties for purposes of the third party can violate the rights of the owners.

Please contact your local SENNEBOGEN sales partner for information concerning the equipment variants offered. Desired performance characteristics are only binding if they are expressly agreed when the contract is concluded. Delivery possibilities and technical features are subject to change. All information is provided without guarantee. We reserve the right to make equipment changes and further developments.


© SENNEBOGEN Maschinenfabrik GmbH, Straubing/Germany. Reproduction, even in part, only with written permission of SENNEBOGEN Maschinenfabrik GmbH, Straubing/Germany.

SENNEBOGEN

SENNEBOGEN
Maschinenfabrik GmbH
Sennebogenstrasse 10
94315 Straubing, Germany

Tel. +49 9421 540-144/146
Fax +49 9421 43 882
marketing@sennebogen.de

GO FOR GREEN

 www.sennebogen.com

Item no. 186167
735MHD-E-0115w-021510-061510-091610