



# **VOLVO TRACKED FORESTRY CARRIERS**

Volvo Construction Equipment



# QUALITY, POWER AND SUPPORT TRUSTED FOR OVER 180 YEARS

## Purpose built from the ground up

Purpose-built for tough forestry applications we have combined our expertise in partnership with leading suppliers in the industry to present the Volvo lineup of forestry excavators.

## Rugged – more than just a word

Working in the forest is demanding work. Nowhere is this more evident than in the applications of harvesting and processing. Steep slopes, mud, snow, frigid winter darkness, searing summer heat, rocky mountain terrain and heavy lifting are standard operating conditions. To be productive in any combination of these conditions, shift after shift, you need a forestry carrier that is safe, strong and, most of all, rugged.

## Pioneering spirit

Founded in Sweden in 1832, the company that became Volvo Construction Equipment has a rich heritage of invention and innovation, and a pioneering spirit that has enabled it to prosper. The worldwide Volvo standard of value has been built around a cornerstone of excellence. As a result, Volvo Construction Equipment has remained a global leader in innovation, quality, productivity, safety, fuel efficiency and environmental care.

Now, new higher standards of value and excellence have been set with the introduction of the Volvo FC family of purposebuilt, tracked forestry carriers. These new forestry carriers are designed and built to the same exacting standards that Volvo customers around the globe have come to expect and rely on.



## **Solutions for you**

Our industry leading machines are just the start of your relationship with Volvo. As your partner, we have developed an extensive range of additional solutions to help you improve uptime, boost productivity and reduce costs.

## **Designed for your business**

Structured across nine blocks, our portfolio of products and services are designed to complement your machine's performance and boost your profitability. Simply put, we offer some of the best guarantees, warranties and technological solutions in the industry today.

## **There when you need us**

Whether you're buying new or used, our global network of dealers and technicians offer around-the-clock support, including machine monitoring and world-class parts availability. It's the basis of everything offered by Volvo Services, so you can be confident we've got you covered right from the start.

# More efficient, more productive, more uptime

## Safety and comfort in mind

At Volvo, we understand that the machine operator's safety and comfort is job one. The newly designed and spacious Volvo Forestry Care Cabs feature integrated heavy-duty, cab risers and tough polycarbonate **30 mm thick** front windows that are worksafe compliant to protect the operator. The cab also features orange hand rails, providing improved visibility for safe access. Every Volvo forestry cab is fully compliant with global safety standards as defined by OSHA, WCB, SAE and ISO. The fully adjustable climate control system keeps everything comfortable on those hot, steamy summer days, and the heated operator seat makes starting work on frigid winter mornings more bearable. Operators can take advantage of Bluetooth connectivity to sync with their devices, and an optional air pressure supply in the cabin. Plus, all machines also feature a right-hand side and rear-view camera, improving the range of visibility for operators.

## Modern, functional and ready to work

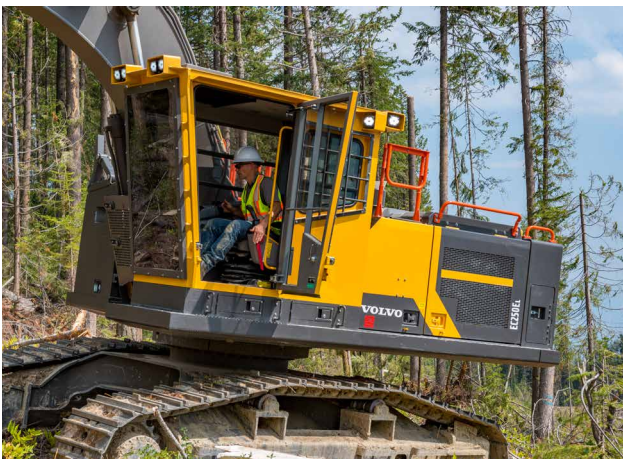
All forestry carriers from Volvo come with heavy duty guarding to protect your machine. The engine hood, side doors, side impact protection, bottom plating, and swing ring cover have all been reinforced to withstand the tough conditions. In addition, there is a log deflector on the right side of the machine and boom cylinder protection. An optional fuel tank counterweight maximizes productivity in the woods.

The Harvesters/Processors and Roadbuilders have an optional 8 or 13 inch cab riser and an optional boom riser. The Harvesters/Processors have purpose built arm for the application. The Roadbuilders uses a conventional excavator arm. The Log Loaders are purpose built with dedicated boom and arm for maximum loading efficiency. Optional 4'11" cab riser with rear entry cab provides excellent visibility for the operator

## Capabilities you can count on

When it comes to forestry applications – road building, stump harvesting or silviculture – the power, durability and versatility of the Volvo FC family of heavy-duty, tracked forestry carriers is second to none. Superior boom and arm construction, powerful V-ACT engines and smooth hydraulics assure that you will never be stumped on the job site.

Plus, with X3 plumbing that ensures full hydraulic flow in the machine even while running attachments and a travel boost system that allows for operation at higher travel pressure than the rest of the machine, you get performance you can trust in any conditions.





# THE UNIQUE BENEFITS OF CHOOSING A VOLVO

When you choose a Volvo you not only get world-class forestry equipment. You also get full support from us. Our well-trained dealers are at your service all over the world and you can choose from a range of additional services, specifically designed for our machines, allowing you to further increase your profitability.



**Optional boom riser**

**Log deflector with 2 LED  
lights**

**Boom cylinder  
protection**

**Swing ring cover**

**Extra duty lower frame  
belly cover**

**High & wide under carriage  
with full track guard**

**Optional 4 LED boom lights  
with arm cylinder guard**

**Optional Forestry cab with 8  
or 13 inch cab riser**

**Optional heavy counterweight  
with integrated fuel tank**

**Heavy-duty engine hood  
and side doors with  
reinforced latches**

**Wide side impact  
protection and reinforced  
bottom plating**

**Steel reinforced  
battery box**



# VOLVO SERVICES & SUPPORT

## Invest smartly

When you choose a new Volvo tracked forestry carrier, you make an investment in equipment that you need to trust shift after shift for years to come. That's why you choose Volvo – for reliable and powerful machines that you can trust to make quick work of your forestry jobs.

## Volvo Financial Services

At Volvo Financial Services, we really understand the industry and the machines you rely on every day. But we also appreciate that every job, machine operator and business operation is different. That's why we take time to understand your needs and offer the customized financing solutions that will work the hardest for your situation.







# EASY MACHINE MONITORING

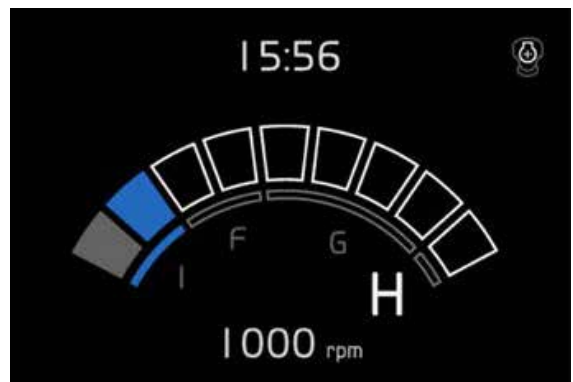
Maximize machine uptime and reduce repair costs with ActiveCare Direct. Utilizing CareTrack data, the intelligent service provides round the clock machine monitoring and tailored customer reports, helping you to keep track of your fleet and take preventive maintenance actions.

# Specifications

Description		Units	EC220E	EC250E	EC300E	EC380E
	Engine Model		Volvo D6J	Volvo D8M	Volvo D8M	Volvo D13J
Engine	Maximum HP	rps (rpm)	30 (1,800)	26.7 (1,600)	26.7 (1,600)	28 (1,700)
	Gross	kW (HP)	129 (173)	168 (225)	189 (253)	230 (308)
	Net (ISO 9249/J1349)	kW (HP)	128 (172)	167 (224)	188 (252)	229 (307)
	Maximum Torque	rps (rpm)	22.5 (1,350)	22.5 (1,350)	23.3 (1,400)	21.25 (1,275)
	Maximum Torque	Nm (lbf ft)	849 (626)	1,166 (860)	1,290 (951)	1,692 (1,248)
	Displacement	L (cu in)	5.7 (348)	7.7 (470)	7.7 (470)	12.8 (781)
	Bore	mm (in)	98 (3.86)	110 (4.33)	110 (4.33)	131 (5.16)
	Stroke	mm (in)	126 (4.96)	135 (5.30)	135 (5.30)	158 (6.22)
Electrical	Voltage	volt	24	24	24	24
	Batteries	# x volt	2 x 12	2 x 12	2 x 12	2 x 12
	Battery Capacity	Ah	140	170	200	200
	Alternator	volt / amps	28 / 80	28 / 80	28 / 80	28 / 80
Capacities	Fuel Tank	L (gal)	320 (85)	472 (124)	472 (124.7)	620 (164)
	Optional Fuel Tank	L (gal)	650 (172)	650 (172)	650 (172)	N/A
	DEF Tank	L (gal)	27 (7)	50 (13)	50 (13)	62.5 (16.5)
	Hydraulic System Total	L (gal)	290 (77)	385 (101.7)	385 (101.7)	500 (132)
	Hydraulic Tank	L (gal)	140 (37)	215 (56.8)	215 (56.8)	225 (59)
	Engine Oil	L (gal)	25 (7)	33 (7.9)	30 (7.9)	55 (15)
	Engine Coolant	L (gal)	35 (9)	44 (12)	44 (12)	60 (16)
	Swing Reduction Unit	L (gal)	6 (2)	5.9 (1.6)	6.1 (1.6)	6.5 (1.7)
	Travel Reduction Unit	# x L (# x gal)	2 x 5.8 (2 x 2)	2 x 5.0 (2 x 1.3)	2 x 6 (2 x 1.6)	2 x 7.5 (2 x 2.0)

## Automatic idling system

Engine speed is reduced to idle when the controls are inactive for a pre-set amount of time (between 3 and 20 seconds), which reduces fuel consumption and noise for nearby workers.



## Eco-gauge

Eco-gauge is an added gauge bar that indicates momentary fuel consumption and can be reset through the display monitor. This will track fuel consumption under different applications.

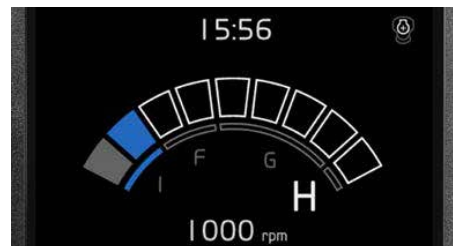


# Specifications

Description		Units	EC220E	EC250E	EC300E	EC380E
<b>Slew</b>	Maximum Swing Speed	rpm	11.1	11.9	10.7	10.2
	Swing Torque	Nm (lbf ft)	83 (61,220)	91.7 (67,630)	110.9 (81,790)	130.5 (96,24)
<b>Drive</b>	Maximum Drawbar Pull	kN (lbs f)	217 (48,785)	248 (55,755)	276.5 (62,160)	333.4 (74,950)
	Maximum Speed	kph (mph)	3.0-4.8 (1.8-3.0)	3.1-5.1 (1.9-3.1)	2.9-4.5 (1.8-2.8)	2.5-4.3 (1.6-2.7)
	Gradeability	degrees (%)	35° / 70%	35° / 70%	35° / 70%	35° / 70%
<b>Undercarriage</b>	Track Pads	# tracks x # pads	2 x 49	2 x 51	2 x 50	2 x 52
	Link Pitch	mm (in)	190 (7.5)	203 (8.0)	216 (8.5)	216 (8.5)
	Shoe Width Triple Grouser	mm (in)	600, 700, 800 (24, 28, 32)	600, 700, 800 (24, 28, 32)	600, 700, 800 (24, 28, 32)	N/A
	Shoe Width Double Grouser	mm (in)	700 (28)	700 (28)	700 (28)	700 (28)
	Bottom Rollers	-	2 x 9	2 x 9	2 x 9	2 x 9
	Top Rollers	-	2 x 2	2 x 2	2 x 2	2 x 3
<b>Hydraulics</b>	Main Pump Type	2 x variable displacement axial piston pumps				
	Max Flow	# x lpm (# x gpm)	2 x 207 (2 x 55)	2 x 240 (2 x 63)	2 x 263 (2 x 69)	2 x 300 (2 x 79)
	Pressure Implement Circuit	Mpa (psi)	34.3-36.3 (4,980-5,260)	33.3-36.3 (4,840-5,260)	33.3-36.3 (4,840-5,260)	32.4-35.3 (4,690-5,120)
	Pressure Travel Circuit	Mpa (psi)	34.3 (4,980)	36.3 (5,260)	36.3 (5,260)	32.4 (4,690)
	Pressure Slew Circuit	Mpa (psi)	27.9 (4,050)	27.9 (4,050)	27.9 (4,050)	27.9 (4,050)
	Pilot Pump Type	-	gear pump	gear pump	gear pump	gear pump
	Max Flow	lpm (gpm)	18 (5)	18 (4.8)	18 (4.8)	32.6 (8.6)
	Pressure Pilot Circuit	Mpa (psi)	3.9 (570)	3.9 (570)	3.9 (570)	3.9 (570)
	Optional Auxillary Hydraulics X3	Pump Type	gear pump			
	X3 Max Flow at Max Speed	(lpm / gpm)	60 / 15.8			
	X3 Pressure	(Mpa / psi)	19.0 / 2756			
	Hydraulic Motor Type Travel	variable displacement axial piston motor with mechanical brake				
	Hydraulic Motor Type Swing	fixed displacement axial piston motor with mechanical brake				
	Hydraulic Cylinders Boom (bore x stroke)	mm (in)	125 x 1,235 (4.9 x 48.6)	135 x 1,345 (5.3 x 53)	140 x 1,480 (5.5 x 58.3)	160 x 1,530 (6.3 x 60.2)
	Hydraulic Cylinders Arm (diameter x stroke)	mm (in)	135 x 1,540 (5.3 x 60.6)	140 x 1,665 (5.5 x 65.6)	150 x 1,745 (5.9 x 68.7)	175 x 1,700 (6.9 x 66.9)
Hydraulic Cylinders Bucket (diameter x stroke)	mm (in)	120 x 1,065 (4.7 x 41.9)	130 x 1,150 (5.1 x 45.3)	140 x 1,140 (5.5 x 44.9)	145 x 1,285 (5.7 x 50.6)	

## Work modes

Volvo's integrated work mode system now includes the G4 mode for optimum fuel efficiency and machine performance. You can choose the best work mode for the task at hand – select from I (Idle), F (Fine), G (General) and H (Heavy).

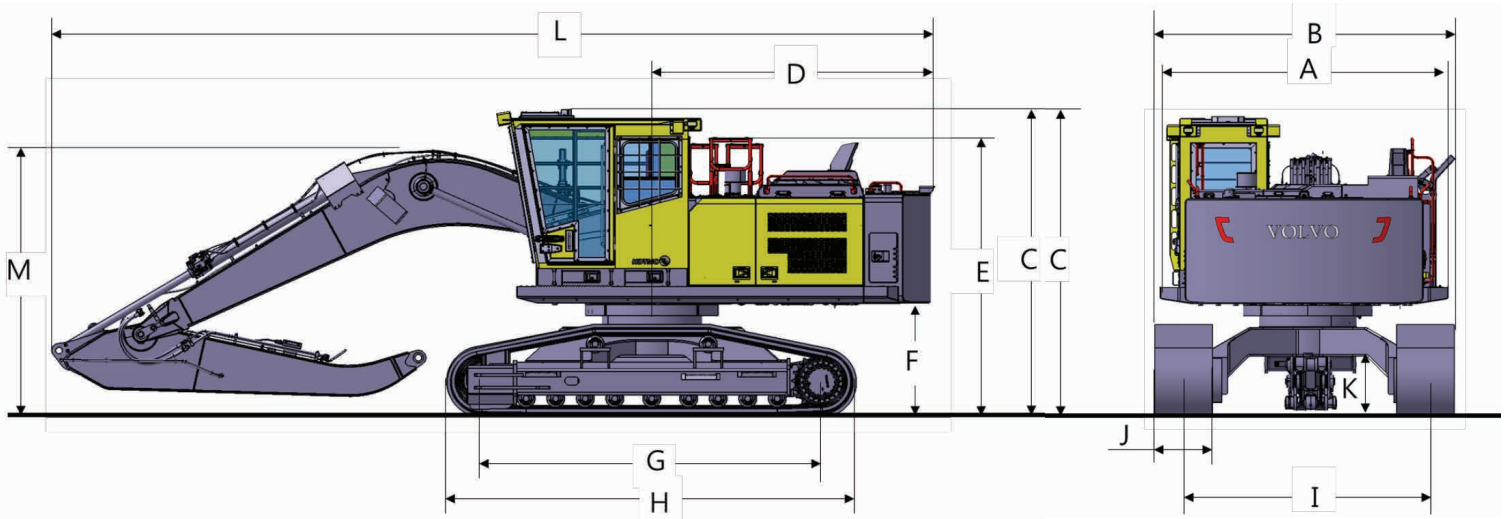


## Auto-engine shut down

E-Series excavators feature automatic engine shutdown for when the machine is not being used. When the machine is motionless for five minutes, the engine will automatically turn off and reduce your running costs.



# Harvesters and Processors



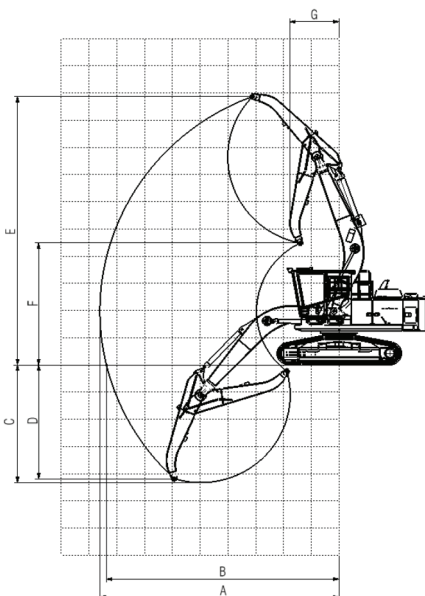
Description	Unit	EC220E	EC250E	EC300E
Boom	m (ft in)	5.7 (18' 8")	6.0 (19'8")	6.2 (20'4")
Boom weight	kg (lb)	2151 (4740)	2360 (5200)	2810 (6200)
Arm (dedicated)	m (ft in)	3.2 (10' 6")	3.3 (10'10")	3.38 (11'1")
Arm weight	kg (lb)	963 (2123)	1116 (2460)	1354 (2985)
Frame		High walker, cab riser 200 mm (8")	High walker, cab riser 200 mm (8")	High walker, cab riser 200 mm (8")
Operating Weight	kg (lb)– w/ harvester arm	28,100 (61,950)	33 900 (74,740)	37 500 (82,670)
A. Overall width of upper structure	mm (ft in)	3,140 (10' 4")	3,490 (11' 5")	3,490 (11' 5")
B. Overall width	mm (ft in)	3,320 (10' 11")	3,500 (11' 6")	3,500 (11' 6")
C. Overall height of cab with cab riser 325mm	mm (ft in)	3,544 (11' 8") 3,669 (12' 1")	3,690 (12' 2") 3,815 (12' 7")	3,711 (12' 3") 3,836 (12' 7")
D. Tail slew radius	mm (ft in)	3,175 (10' 5")	3,350 (11' 0")	3,350 (11' 0")
E. Overall height of engine hood	mm (ft in)	3,160 (10' 4") @ hand rail guard	3,360 (11' 0") @ hand rail guard	3,394 (11' 2") @ hand rail guard
F. *Counterweight clearance	mm (ft in)	1,200 (3' 11")	1,346 (4' 5")	1,367 (4' 6")
G. Tumbler length	mm (ft in)	3,660 (12' 0")	4,015 (13' 2")	4,015 (13' 2")
H. Track length	mm (ft in)	4,480 (14' 8")	4,850 (15' 11")	4,850 (15' 11")
I. Track gauge	mm (ft in)	2,620 (8' 7")	2,800 (9' 2")	2,800 (9' 2")
J. Shoe width	mm (in)	700 (28")	700 (28")	700 (28")
K. *Min. ground clearance	mm (ft in)	638 (2' 1")	710 (2' 4")	733 (2' 5")
L. Overall length	mm (ft in)	10,085 (33' 1")	10,450 (34' 3")	10,705 (35' 2")
M. Overall height of boom	mm (ft in)	3,050 (10' 0")	3,100 (10' 2")	3,400 (11' 2")



# EC220E HARVESTER Lifting capacity

EC220E FC											
Harvester Arm   HD Boom : 5.7m   Arm (Dedicated) : 3.2m   Shoe : 700 mm   CWT : 5,487 Kg											
	3.0m (9' 10")		4.5m (14' 9")		6.0m (19' 8")		7.5m (24' 7")		Max. Reach		
	Along	Across	Along	Across	Along	Across	Along	Across	Along	Across	m (ft in)
7.5 m	-	-	-	-	*6,590	*6,590	-	-	*6,240	*6,240	6.5
(24' 7")	-	-	-	-	*14,530	*14,530	-	-	*13,755	*13,755	(21' 5")
6.0 m	-	-	-	-	*7,220	*6,460	-	-	*5,820	4,960	7.5
(19' 8")	-	-	-	-	*15,915	*14,240	-	-	*12,830	10,935	(24' 7")
4.5 m	-	-	-	-	*8,340	6,650	*6,800	4,720	*5,750	4,230	8.2
(14' 9")	-	-	-	-	*18,385	14,660	*14,990	10,405	*12,675	9,325	(26' 11")
3.0 m	-	-	*10,740	9,540	*8,380	6,350	*7,310	4,580	*5,900	3,850	8.5
(9' 10")	-	-	*23,675	21,030	*18,475	14,000	*16,115	10,095	*13,005	8,490	(27' 11")
1.5 m	-	-	*13,190	8,900	*9,630	6,030	7,860	4,420	*6,300	3,720	8.6
(4' 11")	-	-	*29,080	19,620	*21,230	13,295	17,330	9,745	*13,890	8,200	(28' 3")
0 m	-	-	*14,550	8,560	*10,520	5,810	7,730	4,310	6,730	3,780	8.3
(0' 0")	-	-	*32,075	18,870	*23,190	12,810	17,040	9,500	14,835	8,335	(27' 3")
-1.5 m	*13,130	*13,130	*14,750	8,470	*10,610	5,730	7,700	4,270	7,300	4,080	7.8
(-4' 11")	*28,945	*28,945	*32,520	18,675	*23,390	12,630	16,975	9,415	16,095	8,995	(25' 7")

## Working range EC220E FC with 5.7m Boom & 3.2m Harvester Arm



### Notes

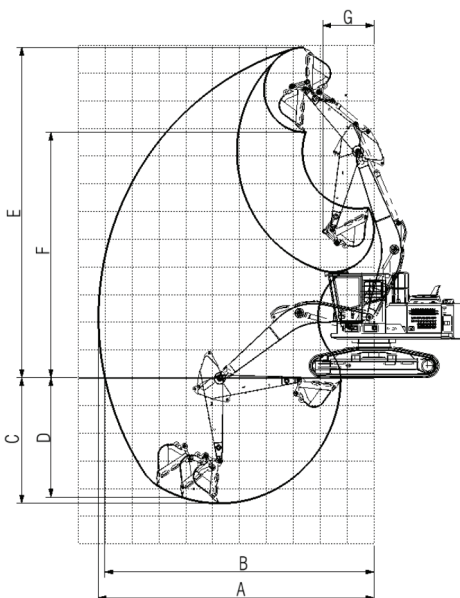
- Lifting capacity at the arm end without attachment
- Machine in "Fine Mode-F" (Power Boost), for lifting capacities.
- The below loads are in compliance with SAE J1097 and ISO 10567 Hydraulic Excavator Lift Capacity Standards
- Rated loads do not exceed 87% of hydraulic lifting capacity or 75% of tipping load.
- Rated loads marked with an asterisk (\*) are limited by hydraulic capacity rather than tipping load.

No.	Description	Unit	Dimension
A	Max. digging reach	mm (ft in)	8,608 (28' 3")
B	Max. digging reach on ground	mm (ft in)	8,373 (27' 6")
C	Max. digging reach	mm (ft in)	4,329 (14' 2")
D	Max. digging depth (8' level)	mm (ft in)	4,187 (13' 9")
E	Max. arm pin height	mm (ft in)	9,874 (32' 5")
F	Arm pin height @ max. dumping	mm (ft in)	4,482 (14' 8")
G	Min. front swing radius	mm (ft in)	1,778 (5' 10")

# EC250E HARVESTER Lifting capacity

EC250E FC											
Harvester Arm   HD Boom : 6.0m   Arm (Dedicated) : 3.3m   Shoe : 700 mm   CWT : 5,487 Kg											
	3.0m (9' 10")		4.5m (14' 9")		6.0m (19' 8")		7.5m (24' 7")		Max. Reach		
	Along	Across	Along	Across	Along	Across	Along	Across	Along	Across	m (ft in)
7.5 m	-	-	-	-	-	-	-	-	*7,570	7,320	7.0
(24' 7")	-	-	-	-	-	-	-	-	*16,690	16,138	(23' 0")
6.0 m	-	-	-	-	*7,750	*7,750	*7,840	5,940	*7,260	5,710	8.0
(19' 8")	-	-	-	-	*17,085	*17,085	*17,285	13,095	*16,005	12,590	(26' 3")
4.5 m	-	-	*10,350	*10,350	*8,860	8,250	*8,200	5,830	*7,290	4,980	8.5
(14' 9")	-	-	*22,820	*22,820	*19,535	1,890	*18,080	12,855	*16,070	10,980	(27' 11")
3.0 m	-	-	*13,740	11,880	*10,450	7,830	*8,960	5,630	7,300	4,510	8.8
(9' 10")	-	-	*30,290	26,190	*23,040	17,260	*19,755	12,410	16,095	9,945	(28' 10")
1.5 m	-	-	*16,690	11,090	*12,010	7,430	8,900	5,430	7,110	4,360	8.8
(4' 11")	-	-	*36,795	24,450	*26,475	16,380	19,620	11,970	15,675	9,610	(28' 10")
0 m	-	-	*18,190	10,700	12,190	7,160	8,720	5,270	7,280	4,430	8.5
(0' 0")	-	-	*40,100	23,590	26,875	15,785	19,225	11,620	16,050	9,765	(27' 11")
-1.5 m	*13,310	*13,310	*18,370	10,600	12,050	7,050	8,660	5,210	7,890	4,780	8.0
(-4' 11")	*29,345	*29,345	*40,500	23,370	26,565	15,540	19,090	11,485	17,395	10,540	(26' 3")
-3.0 m	*22,190	*20,910	*17,440	10,620	12,090	7,090	-	-	9,300	5,590	7.1
(-9' 10")	*48,920	*46,100	*38,450	23,415	26,655	15,630	-	-	20,505	12,325	(23' 4")

## Working range EC250E FC with 6.0m Boom & 3.3m Harvester Arm



### Notes

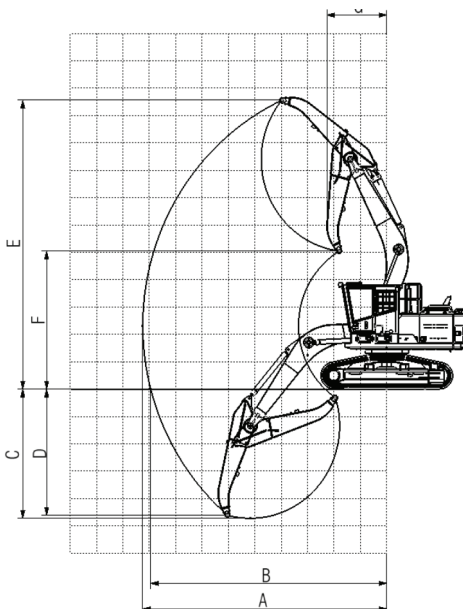
- Lifting capacity at the arm end without attachment
- Machine in "Fine Mode-F" (Power Boost), for lifting capacities.
- The below loads are in compliance with SAE J1097 and ISO 10567 Hydraulic Excavator Lift Capacity Standards
- Rated loads do not exceed 87% of hydraulic lifting capacity or 75% of tipping load.
- Rated loads marked with an asterisk (\*) are limited by hydraulic capacity rather than tipping load.

No.	Description	Unit	Dimension
A	Max. digging reach	mm (ft in)	8,846 (29' 0")
B	Max. digging reach on ground	mm (ft in)	8,568 (28' 1")
C	Max. digging reach	mm (ft in)	4,453 (14' 7")
D	Max. digging depth (8' level)	mm (ft in)	4,378 (14' 4")
E	Max. arm pin height	mm (ft in)	10,179 (33' 5")
F	Arm pin height @ max. dumping	mm (ft in)	4,922 (16' 2")
G	Min. front swing radius	mm (ft in)	1,841 (6' 0.5")

# EC300E HARVESTER Lifting capacity

EC300E FC											
Harvester Arm   HD Boom : 6.2m   Arm (Dedicated) : 3.38m   Shoe : 700 mm   CWT : 6205 Kg											
	3.0m (9' 10")		4.5m (14' 9")		6.0m (19' 8")		7.5m (24' 7")		Max. Reach		m (ft in)
	Along	Across	Along	Across	Along	Across	Along	Across	Along	Across	
7.5 m	-	-	-	-	-	-	-	-	*8,180	7,906	7.6
(24' 7")	-	-	-	-	-	-	-	-	*18,035	17,430	(24' 11")
6.0 m	-	-	-	-	*8,370	*8,370	*8,470	6,415	*7,840	6,167	8.5
(19' 8")	-	-	-	-	*18,455	*18,455	*18,675	14,145	*17,285	13,595	(27' 11")
4.5 m	-	-	*11,180	*11,180	*9,570	8,910	*8,860	6,296	*7,870	5,378	9.0
(14' 9")	-	-	*24,645	*24,645	*21,100	19,645	*19,535	13,880	*17,350	*11,855	(29' 6")
3.0 m	-	-	*14,840	12,830	*11,290	8,456	*9,680	6,080	7,884	4,871	9.2
(9' 10")	-	-	*32,715	28,285	*24,890	18,640	*21,340	13,405	17,380	10,740	(30' 2")
1.5 m	-	-	*18,020	11,977	12,971	8,024	9,612	5,864	7,679	4,709	9.2
(4' 11")	-	-	*39,725	26,405	28,595	17,690	21,190	12,930	16,930	10,380	(30' 2")
0 m	-	-	*19,640	11,556	13,165	7,733	9,418	5,692	7,862	4,784	8.9
(0' 0")	-	-	*43,300	23,475	29,025	17,050	20,765	12,550	17,335	10,545	(29' 2")
-1.5 m	*14,370	*14,370	*19,840	11,448	13,014	7,614	9,353	5,627	8,521	5,162	8.4
(-4' 11")	*31,680	*31,680	*43,740	25,240	28,690	16,785	20,620	12,405	18,785	11,380	(27' 7")
-3.0 m	*23,960	*22,580	*18,830	11,470	13,057	7,657	-	-	10,044	6,037	7.5
(-9' 10")	*52,820	*49,780	*41,515	25,285	28,785	16,880	-	-	22,145	13,310	(24' 7")

## Working range EC300E FC with 6.2m Boom & 3.38m Harvester Arm x



### Notes

- Lifting capacity at the arm end without attachment
- Machine in "Fine Mode-F" (Power Boost), for lifting capacities.
- The below loads are in compliance with SAE J1097 and ISO 10567 Hydraulic Excavator Lift Capacity Standards
- Rated loads do not exceed 87% of hydraulic lifting capacity or 75% of tipping load.
- Rated loads marked with an asterisk (\*) are limited by hydraulic capacity rather than tipping load.

No.	Description	Unit	Dimension
A	Max. digging reach	mm (ft in)	9,245 (30' 4")
B	Max. digging reach on ground	mm (ft in)	8,944 (29' 4")
C	Max. digging reach	mm (ft in)	4,723 (15' 6")
D	Max. digging depth (8' level)	mm (ft in)	4,612 (15' 2")
E	Max. Arm pin height	mm (ft in)	10,562 (34' 8")
F	Arm pin height @ Max. dumping	mm (ft in)	5,046 (16' 7")
G	Min. front swing radius	mm (ft in)	2,270 (7' 5")

**Note:** The specifications are based on the Arm end





VOLVO

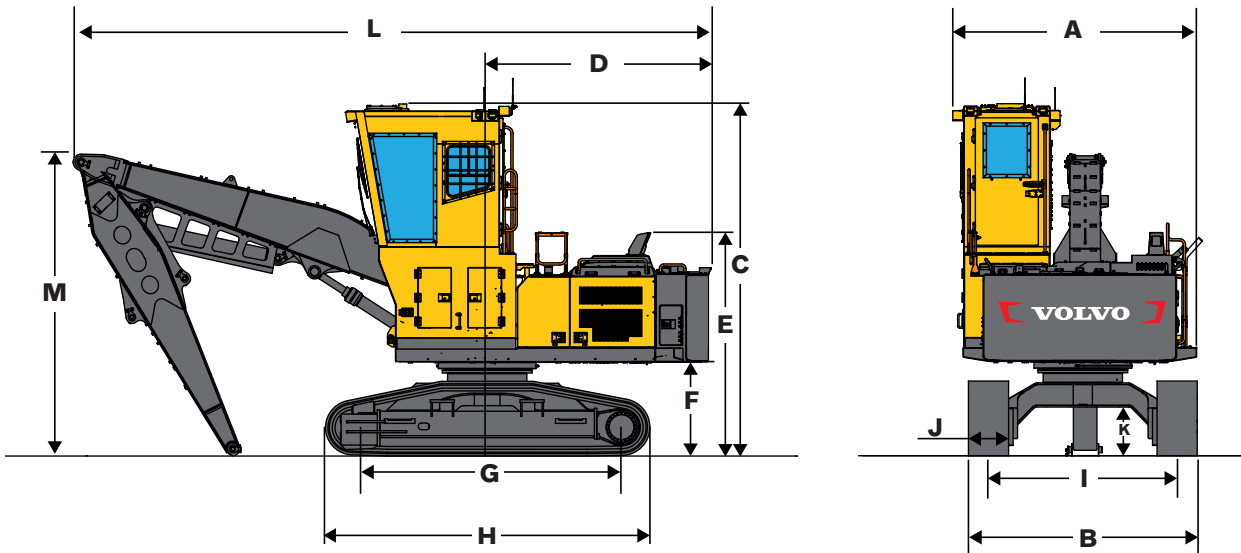
VOLVO

CAUTION  
STAY BACK  
300 FEET

EC250E  
HYDRA-DRIVE

VOLVO

# LOG LOADER

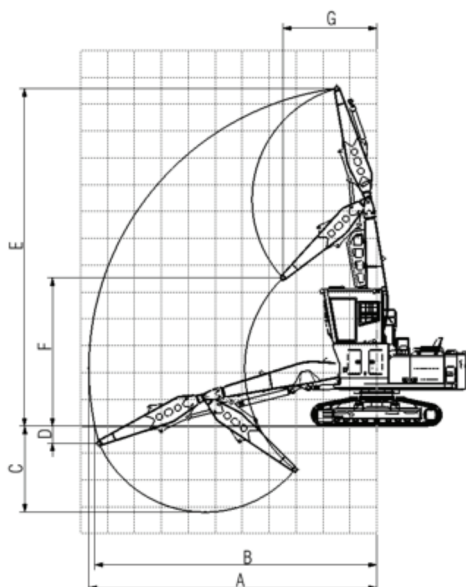


Description	Unit	EC250E	EC300E
Boom for log loader	m (ft in)	6.3 (20' 8")	6.62 (21' 9")
Arm for log loader	m (ft in)	4.3 (14' 1")	4.5 (14' 9")
Frame		High walker undercarriage, cab riser 1508 mm (4' 11")	Cab with 1508 mm cab riser
Weight (without Live Heel)	kg (lb)	36,500 (80,470)	45.1 (99,520)
A. Overall width of upper structure	mm (ft in)	3638 (11' 11")	3643 (11' 11")
B. Overall width	mm (ft in)	3500 (11' 6")	3500 (11' 6")
C. Overall height of cab	mm (ft in)	5239 (17' 3")	5252 (17' 3")
C. Overall height of cab with cab folded down	mm (ft in)	3670 (12' 1")	3690 (12' 2")
D. Tail slew radius	mm (ft in)	3350 (11' 0")	3485 (11' 5")
E. Overall height of engine hood to muffler guard	mm (ft in)	3300 (10' 10")	3393 (11' 2")
F. *Counterweight clearance	mm (ft in)	1346 (4' 5")	1367 (4' 6")
G. Tumbler length	mm (ft in)	4015 (13' 2")	4015 (13' 2")
H. Track length	mm (ft in)	4852 (15' 11")	4850 (15' 11")
I. Track gauge	mm (ft in)	2800 (9' 2")	2800 (9' 2")
J. Shoe width	mm (ft in)	700 (2' 4")	700 (2' 4")
K. *Min. ground clearance	mm (ft in)	710 (2' 4")	733 (2' 5")
L. Overall length with arm extended	mm (ft in)	12 445 (40' 10")	13 150 (43' 2")
L. <sup>1</sup> Overall length with arm fully retracted	mm (ft in)	9670 (31' 9")	9910 (32' 6")
M. Overall height of Boom with arm extended	mm (ft in)	3625 (11' 11")	3690 (12' 2")
M. <sup>1</sup> Overall height of Boom with arm fully retracted	mm (ft in)	4130 (13' 7")	4415 (14' 6")

# EC250E LOG LOADER Lifting capacity without Live Heel

EC250E FC											
Log Loader   Boom : 6.3m   Log Loader Arm (4.3m)   Shoe : 700 mm   CWT : 6,000 Kg											
	3.0m (9' 10")		4.5m (14' 9")		6.0m (19' 8")		7.5m (24' 7")		Max. Reach		
	Along	Across	Along	Across	Along	Across	Along	Across	Along	Across	m (ft in)
7.5 m	-	-	-	-	-	-	-	-	*8020	7760	8.2
(24' 7")	-	-	-	-	-	-	-	-	*17680	17110	(29' 11")
6.0 m	-	-	-	-	*8220	*8220	*8310	6300	*7700	6050	9.3
(19' 8")	-	-	-	-	*18120	*18120	*18320	13890	*16975	13340	(30' 6")
4.5 m	-	-	*10970	*10970	*9390	8750	*8690	6180	*7730	5280	10.4
(14' 9")	-	-	*24185	*24185	*20700	19290	*19160	13625	*17040	11640	(34' 1")
3.0 m	-	-	*14560	12590	*11080	8300	*9500	5970	7740	4780	10.2
(9' 10")	-	-	*32100	27755	*24425	18300	*20945	13160	17065	10540	(33' 6")
1.5 m	-	-	*17690	11760	*12730	7880	9430	5760	7540	4620	10.3
(4' 11")	-	-	*39000	25925	*28065	17370	20790	12700	16625	10185	(33' 10")
0 m	-	-	*19280	11340	12920	7590	9240	5590	7720	4700	10.1
(0' 0")	-	-	*42505	25000	28485	16735	20370	12325	17020	10360	(33' 2")
-1.5 m	*14110	*14110	*19470	11240	12770	7470	9180	5520	8360	5070	9.6
(-4' 11")	*31105	*31105	*42925	24780	28155	16470	20240	12170	18430	11175	(31' 6")
-3.0 m	*23520	*22170	*18490	11260	12820	7520	-	-	9860	5930	8.8
(-9' 10")	*51850	*48875	*40765	24825	28265	16580	-	-	21735	13075	(28' 10")

## Working range EC250E FC with Rear entry Cab and Log loader-6.3M Boom & 4.3M Arm



### Notes

- Lifting capacity at the arm end without attachment
- Machine in "Fine Mode-F" (Power Boost), for lifting capacities.
- The below loads are in compliance with SAE J1097 and ISO 10567 Hydraulic Excavator Lift Capacity Standards
- Rated loads do not exceed 87% of hydraulic lifting capacity or 75% of tipping load.
- Rated loads marked with an asterisk (\*) are limited by hydraulic capacity rather than tipping load.

No.	Description	Unit	Dimension
A	Max. digging reach	mm (ft in)	10687 (35' 1")
B	Max. digging reach on ground	mm (ft in)	10466 (34' 4")
C	Max. digging depth	mm (ft in)	3205 (10' 6")
D	Max. digging depth (8° level)	mm (ft in)	636 (2' 1")
E	Max. cutting height	mm (ft in)	12585 (41' 3")
F	Max. dumping height	mm (ft in)	5524 (18' 1")
G	Min. front swing radius	mm (ft in)	3485 (11' 5")

**Note :** The specifications are based on the Log loader Arm end

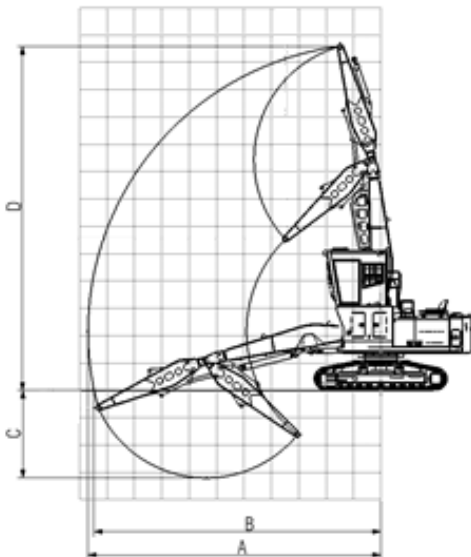
# EC300E LOG LOADER

## Lifting capacity chart

EC300E FC with Rear entry Cab & Log loader Boom/Arm w/o live heel														
EC300E FC	H	4.6m (15')		6.1m (20')		7.6m (25')		9.1m (30')		10.7m (35')		Max. Reach		
		Along	Across	Along	Across	Along	Across	Along	Across	Along	Across	Along	Across	M
Log Loader Boom (6.62M) Log Loader Arm (4.5M) Shoe : 700 mm CVT : 8,000 Kg	12.2 m (40' 0")	*14,978 (33,021)	*14,978 (33,021)	-	-	-	-	-	-	-	-	*14,486 (31,936)	*14,486 (31,936)	5.1 (16'8")
	10.7 m (35' 0")	*13,073 (28,821)	*13,073 (28,821)	*11,437 (25,214)	*11,437 (25,214)	-	-	-	-	-	-	*10,822 (23,858)	9,625 (21,219)	7.3 (24'1")
	9.1 m (30' 0")	-	-	*10,921 (24,077)	*10,921 (24,077)	*9,881 (21,784)	9,484 (20,909)	-	-	-	-	*9,322 (20,551)	7,201 (15,875)	8.9 (29'1")
	7.6 m (25' 0")	-	-	*11,082 (24,432)	*11,082 (24,432)	*9,841 (21,696)	9,507 (20,959)	*8,916 (19,656)	7,076 (15,600)	-	-	8,474 (18,682)	6,102 (13,453)	9.9 (32'4")
	6.1 m (20' 0")	*14,028 (30,926)	*14,028 (30,926)	*11,749 (25,901)	*11,749 (25,901)	*10,146 (22,368)	9,372 (20,662)	*8,969 (19,773)	7,051 (15,545)	-	-	7,624 (16,808)	5,478 (12,077)	10.5 (34'7")
	4.6 m (15' 0")	-	-	*12,696 (27,990)	*12,696 (27,990)	*10,609 (23,389)	9,128 (20,124)	*9,139 (20,148)	6,935 (15,289)	7,449 (16,422)	5,352 (11,799)	7,143 (15,748)	5,120 (11,288)	11.0 (36')
	3.1 m (10' 0")	-	-	*13,710 (30,225)	12,164 (26,817)	*11,098 (24,467)	8,828 (19,462)	*9,307 (20,518)	6,779 (14,945)	7,401 (16,316)	5,305 (11,696)	6,912 (15,238)	4,946 (10,904)	11.2 (36'8")
	1.5 m (5' 0")	-	-	*14,365 (31,669)	11,596 (25,565)	*11,348 (25,018)	8,519 (18,781)	9,274 (20,446)	6,612 (14,577)	*7,323 (16,144)	5,243 (11,559)	*6,356 (14,013)	4,926 (10,860)	11.2 (36'8")
	0 m (0' 0")	-	-	*14,181 (31,264)	11,233 (24,765)	*11,133 (24,544)	8,349 (18,407)	*8,906 (19,634)	6,495 (14,319)	-	-	*6,491 (14,310)	5,221 (11,510)	10.7 (35'1")
	-1.5 m (-5' 0")	*12,257 (27,022)	*12,257 (27,022)	*13,016 (28,695)	11,065 (24,394)	*10,217 (22,525)	8,193 (18,062)	*7,902 (17,421)	6,445 (14,209)	-	-	*7,593 (16,740)	6,268 (13,819)	9.3 (30'6")

## Working range

EC300E FC with Rear entry Cab and Log loader-6.62M Boom & 4.5M Arm



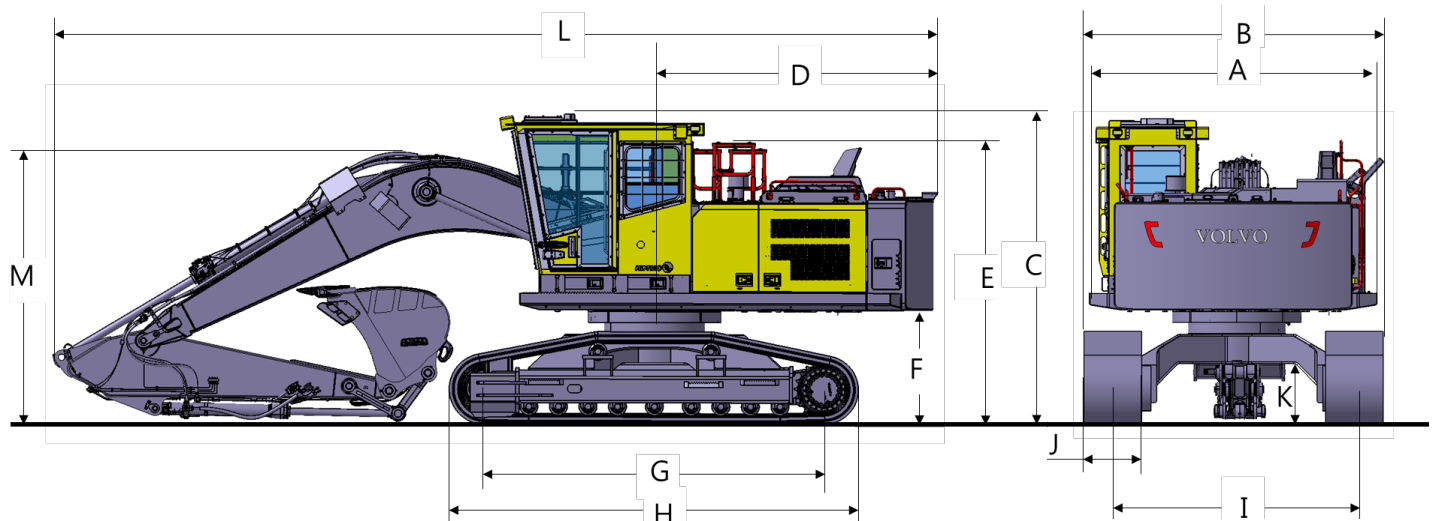
### Notes

- Lifting capacity at the arm end without attachment
- Machine in "Fine Mode-F" (Power Boost), for lifting capacities.
- The below loads are in compliance with SAE J1097 and ISO 10567 Hydraulic Excavator Lift Capacity Standards
- Rated loads do not exceed 87% of hydraulic lifting capacity or 75% of tipping load.
- Rated loads marked with an asterisk (\*) are limited by hydraulic capacity rather than tipping load.

No.	Description	Unit	Dimension
A	Max. reach	mm (ft in)	11,207 (36' 9")
B	Max. reach on ground	mm (ft in)	10,808 (35' 6")
C	Max. working depth	mm (ft in)	2,499 (8' 2")
D	Max. working height	mm (ft in)	13,158 (43' 2")

Note : The specifications are based on the Log loader Arm end

# ROADBUILDERS

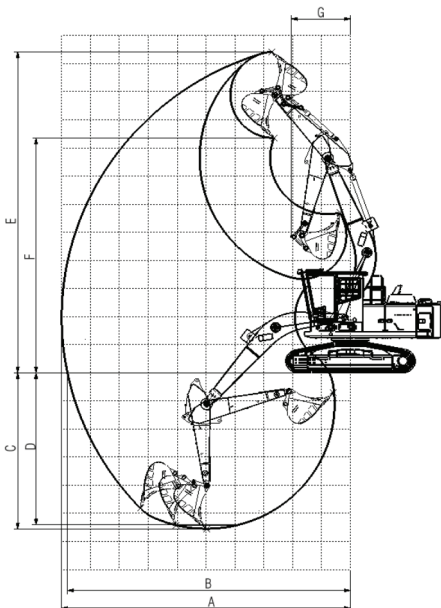


Description	Unit	EC220E	EC250E	EC300E	EC380E
Boom	m (ft in)	5.7 (18' 8")	6 (19' 8")	6.2 (20' 4")	6.45 (21' 2")
Boom weight	kg (lb)	2151 (4740)	2360 (5200)	2810 (6200)	3310 (7300)
Arm	m (ft in)	2.9 (9' 6")	2.97 (9' 9")	3.05 (10' 0")	3.2 (10' 6")
Arm weight	kg (lb)	1183(2610)	1430 (3150)	1590 (3510)	2180 (4810)
Frame		High walker, cab riser 200 mm (8")	High walker, cab riser 200 mm (8")	High walker, cab riser 200 mm (8")	High walker without cab riser
Operating Weight	kg (lb)– w/o bucket	28 000 (61,730)	33 500 (73,850)	37 100 (81,790)	45,700 (100 750)
A. Overall width of upper structure	mm (ft in)	3,140 (10' 4")	3,490 (11' 5")	3,490 (11' 5")	3,490 (11' 5")
B. Overall width	mm (ft in)	3,320 (10' 11")	3,500 (11' 6")	3,500 (11' 6")	3,590 (11' 9")
C. Overall height of cab w 325mm cab riser	mm (ft in)	3,544 (11' 8") 3,669 (12' 1")	3,690 (12' 2") 3,815 (12' 7")	3,711 (12' 3") 3,836 (12' 7")	3,600 (11' 10") (without cab riser)
D. Tail slew radius	mm (ft in)	3,175 (10' 5")	3,350 (11' 0")	3,350 (11' 0")	3,600 (11' 10")
E. Overall height of engine hood	mm (ft in)	3,160 (10' 4") @ hand rail guard	3,360 (11' 0") @ hand rail guard	3,394 (11' 2") @ hand rail guard	3,675 (12' 1") @ engine hood
F. *Counterweight clearance	mm (ft in)	1,200 (3' 11")	1,346 (4' 5")	1,367 (4' 6")	1,347 (4' 5")
G. Tumbler length	mm (ft in)	3,660 (12' 0")	4,015 (13' 2")	4,015 (13' 2")	4,370 (14' 4")
H. Track length	mm (ft in)	4,480 (14' 8")	4,850 (15' 11")	4,850 (15' 11")	5,377 (17' 8")
I. Track gauge	mm (ft in)	2,620 (8' 7")	2,800 (9' 2")	2,800 (9' 2")	2,890 (9' 6")
J. Shoe width	mm (in)	700 (28")	700 (28")	700 (28")	700 (28")
K. *Min. ground clearance	mm (ft in)	638 (2' 1")	710 (2' 4")	733 (2' 5")	710 (2' 4")
L. Overall length	mm (ft in)	10,085 (33' 1")	10,450 (34' 3")	10,705 (35' 2")	11,220 (36' 10")
M. Overall height of boom	mm (ft in)	3,050 (10' 0")	3,100 (10' 2")	3,300 (10' 10")	3,400 (11' 2")

# EC220E ROAD BUILDER Lifting capacity

EC220E FC											
Road Builder   HD Boom : 5.7m   HD Arm : 2.9m   Shoe : 700 mm   CWT : 5,487 Kg											
	3.0m (9' 10")		4.5m (14' 9")		6.0m (19' 8")		7.5m (24' 7")		Max. Reach		
	Along	Across	Along	Across	Along	Across	Along	Across	Along	Across	m (ft in)
7.5 m	-	-	-	-	*6,660	*6,660	-	-	*6,310	*6,310	6.2
(24' 7")	-	-	-	-	*14,685	*14,685	-	-	*13,910	*13,910	(20' 4")
6.0 m	-	-	-	-	*7,300	*6,530	-	-	*5,880	5,010	7.3
(19' 8")	-	-	-	-	*16,094	*14,395	-	-	*12,965	11,045	(23' 11")
4.5 m	-	-	-	-	*8,430	6,720	*6,870	4,770	*5,810	4,280	8
(14' 9")	-	-	-	-	*18,585	14,815	*15,145	10,515	*12,810	9,435	(26' 3")
3.0 m	-	-	*10,860	9,640	*8,470	6,420	*7,390	4,630	*5,960	3,890	8.4
(9' 10")	-	-	*23,940	21,250	*18,675	14,155	*16,290	10,205	*13,140	8,575	(27' 7")
1.5 m	-	-	*13,330	9,000	*9,740	6,100	7,950	4,470	6,370	3,760	8.5
(4' 11")	-	-	*29,385	19,840	*21,475	13,450	17,525	9,855	14,045	8,290	(27' 11")
0 m	-	-	*14,710	8,650	*10,640	5,870	7,820	4,360	6,800	3,820	8.3
(0' 0")	-	-	*32,430	19,070	*23,455	12,940	17,240	9,610	14,990	8,420	(27' 3")
-1.5 m	*13,270	*13,270	*14,910	8,560	*10,730	5,790	7,780	4,320	7,380	4,120	7.8
(-4' 11")	*29,255	*29,255	*32,870	18,870	*23,655	12,765	17,150	9,525	16,270	9,085	(25' 7")

## Working range EC220E FC with 5.7m Boom & 2.9m Arm and GP Bucket



### Notes

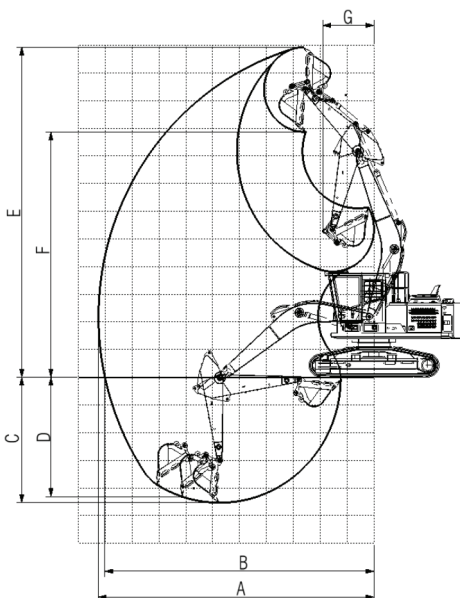
- Lifting capacity at the arm end without attachment
- Machine in "Fine Mode-F" (Power Boost), for lifting capacities.
- The below loads are in compliance with SAE J1097 and ISO 10567 Hydraulic Excavator Lift Capacity Standards
- Rated loads do not exceed 87% of hydraulic lifting capacity or 75% of tipping load.
- Rated loads marked with an asterisk (\*) are limited by hydraulic capacity rather than tipping load.

No.	Description	Unit	Dimension
A	Max. digging reach	mm (ft in)	10,001 (32' 10")
B	Max. digging reach on ground	mm (ft in)	9,802 (32' 2")
C	Max. digging reach	mm (ft in)	5,553 (18' 3")
D	Max. digging depth (8' level)	mm (ft in)	5,410 (17' 9")
E	Max. arm pin height	mm (ft in)	11,418 (37' 6")
F	Arm pin height @ max. dumping	mm (ft in)	8,350 (27' 5")
G	Min. front swing radius	mm (ft in)	2,035 (6' 8")

# EC250E ROAD BUILDER Lifting capacity

EC250E FC											
Road Builder   HD Boom : 6.0m   HD Arm : 2.97m   Shoe : 700 mm   CWT : 5,487 Kg											
	3.0m (9' 10")		4.5m (14' 9")		6.0m (19' 8")		7.5m (24' 7")		Max. Reach		
	Along	Across	Along	Across	Along	Across	Along	Across	Along	Across	m (ft in)
7.5 m	-	-	-	-	-	-	-	-	*7,680	7,430	6.6
(24' 7")	-	-	-	-	-	-	-	-	*16,930	16,380	(21' 8")
6.0 m	-	-	-	-	*7,870	*7,870	*7,960	6,030	*7,370	5,800	7.7
(19' 8")	-	-	-	-	*17,350	*17,350	*17,550	13,295	*16,250	12,785	(25' 3")
4.5 m	-	-	*10,510	*10,500	*8,990	8,370	*8,320	5,920	*7,400	5,050	8.8
(14' 9")	-	-	*23,170	*23,150	*19,820	18,455	*18,340	13,050	*16,315	11,135	(28' 10")
3.0 m	-	-	*13,950	12,060	*10,600	7,950	*9,090	5,710	7,410	4,580	8.6
(9' 10")	-	-	*30,755	26,585	*23,370	17,525	*20,040	12,590	16,335	10,095	(28' 3")
1.5 m	-	-	*16,940	11,260	*12,190	7,540	9,030	5,510	7,220	4,420	8.7
(4' 11")	-	-	*37,345	24,825	*26,875	16,625	19,910	12,145	15,915	9,745	(28' 7")
0 m	-	-	*18,460	10,860	12,370	7,270	8,850	5,350	7,390	4,500	8.5
(0' 0")	-	-	*40,695	23,940	27,270	16,025	19,510	11,795	16,290	9,920	(27' 11")
-1.5 m	*13,510	*13,510	*18,640	10,760	12,230	7,160	8,790	5,290	8,010	4,850	8
(-4' 11")	*29,785	*29,785	*41,095	23,720	26,960	15,785	19,380	11,660	17,660	10,690	(26' 3")
-3.0 m	*22,520	*21,220	*17,700	10,780	12,270	7,200	-	-	9,440	5,670	7.2
(-9' 10")	*49,650	*46,780	*39,020	23,765	27,050	15,875	-	-	20,810	12,500	(23' 7")

## Working range EC250E FC with 6.0m Boom & 2.97m Arm and GP Bucket



### Notes

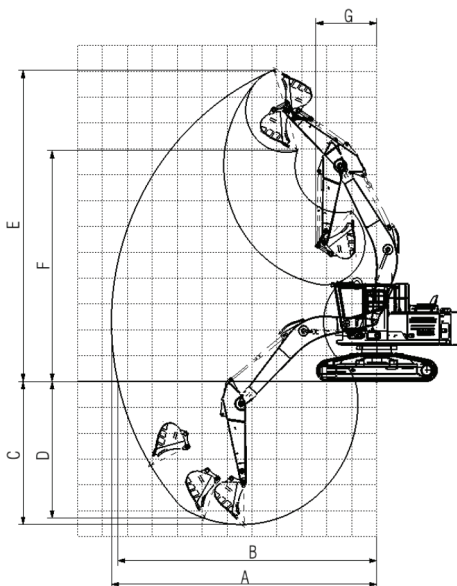
- Lifting capacity at the arm end without attachment
- Machine in "Fine Mode-F" (Power Boost), for lifting capacities.
- The below loads are in compliance with SAE J1097 and ISO 10567 Hydraulic Excavator Lift Capacity Standards
- Rated loads do not exceed 87% of hydraulic lifting capacity or 75% of tipping load.
- Rated loads marked with an asterisk (\*) are limited by hydraulic capacity rather than tipping load.

No.	Description	Unit	Dimension
A	Max. digging reach	mm (ft in)	10,256 (33' 8")
B	Max. digging reach on ground	mm (ft in)	10,016 (32' 10")
C	Max. digging reach	mm (ft in)	4,535 (14' 11")
D	Max. digging depth (8' level)	mm (ft in)	4,313 (14' 2")
E	Max. arm pin height	mm (ft in)	11,936 (39' 2")
F	Arm pin height @ max. dumping	mm (ft in)	8,866 (29' 1")
G	Min. front swing radius	mm (ft in)	1,901 (6' 3")

# EC300E ROAD BUILDER Lifting capacity

EC300E FC											
Road Builder   HD Boom : 6.2m   HD Arm : 3.05m   Shoe : 700 mm   CWT : 6,205 Kg											
	3.0m (9' 10")		4.5m (14' 9")		6.0m (19' 8")		7.5m (24' 7")		Max. Reach		
	Along	Across	Along	Across	Along	Across	Along	Across	Along	Across	m (ft in)
7.5 m	-	-	-	-	-	-	-	-	*8,340	8,060	7.2
(24' 7")	-	-	-	-	-	-	-	-	*18,385	17,770	(23' 7")
6.0 m	-	-	-	-	*8,540	*8,540	*8,640	6,540	*8,000	6,290	8.2
(19' 8")	-	-	-	-	*18,825	*18,825	*19,050	14,420	*17,635	13,865	(26' 11")
4.5 m	-	-	*11,400	*11,400	*9,760	9,090	*9,040	6,420	*8,030	5,490	8.7
(14' 9")	-	-	*25,130	*25,130	*21,515	20,040	*19,930	14,155	*17,705	12,105	(28' 7")
3.0 m	-	-	*15,140	13,090	*115,20	8,630	*9,870	6,200	8,040	4,970	9
(9' 10")	-	-	*33,380	28,860	*25,395	19,025	*21,760	13,670	17,725	10,955	(29' 6")
1.5 m	-	-	*18,380	12,220	13,230	8,180	9,800	5,980	7,830	4,800	9.1
(4' 11")	-	-	*40,520	26,940	29,165	18,035	21,605	13,185	17,260	10,580	(29' 10")
0 m	-	-	*20,030	11,790	13,430	7,890	9,610	5,800	8,020	4,880	8.9
(0' 0")	-	-	*44,160	25,990	29,610	17,395	21,185	12,785	17,680	10,760	(29' 2")
-1.5 m	*14,660	*14,660	*20,240	11,680	13,270	7,770	9,540	5,740	8,690	5,270	8.4
(-4' 11")	*32,320	*32,320	*44,620	25,750	29,255	17,130	21,030	12,655	19,160	11,620	(27' 7")
-3.0 m	*24,440	*23,030	*19,210	11,700	13,320	7,810	-	-	10,240	6,160	7.5
(-9' 10")	*53,880	*50,770	*42,350	25,795	29,365	17,220	-	-	22,575	13,580	(24' 7")

## Working range EC300E FC with 6.2m Boom & 3.05m Arm and GP Bucket



### Notes

1. Lifting capacity at the arm end without attachment
2. Machine in "Fine Mode-F" (Power Boost), for lifting capacities.
3. The below loads are in compliance with SAE J1097 and ISO 10567 Hydraulic Excavator Lift Capacity Standards
4. Rated loads do not exceed 87% of hydraulic lifting capacity or 75% of tipping load.
5. Rated loads marked with an asterisk (\*) are limited by hydraulic capacity rather than tipping load.

No.	Description	Unit	Dimension
A	Max. digging reach	mm (ft in)	10,634 (34' 11")
B	Max. digging reach on ground	mm (ft in)	10,383 (34' 0")
C	Max. digging reach	mm (ft in)	5,529 (18' 2")
D	Max. digging depth (8' level)	mm (ft in)	5,288 (17' 4")
E	Max. arm pin height	mm (ft in)	12,043 (39' 6")
F	Arm pin height @ max. dumping	mm (ft in)	8,935 (29' 4")
G	Min. front swing radius	mm (ft in)	2,444 (8' 0")



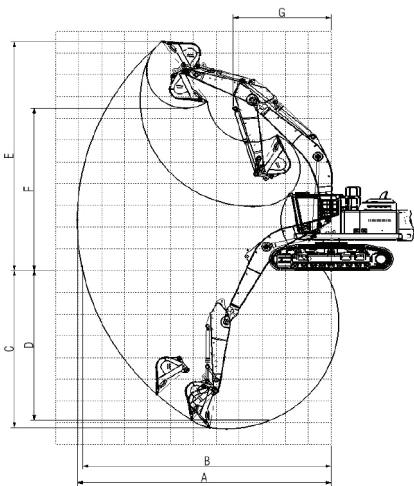
# EC380E ROAD BUILDER Lifting capacity

EC380E FC													
Road Builder   HD Boom : 6.45m   HD Arm : 3.2m   Shoe : 700 mm   CWT : 7,250 Kg													
	3.0m (9' 10")		4.5m (14' 9")		6.0m (19' 8")		7.5m (24' 7")		9.0m (29' 6")		Max. Reach		
	Along	Across	Along	Across	Along	Across	Along	Across	Along	Across	Along	Across	m (ft in)
7.5 m	-	-	-	-	-	-	*9,460	*9,460	-	-	*9,914	9,906	8.2
(24' 7")	-	-	-	-	-	-	*20,855	*20,855	-	-	*21,855	21,840	(26' 11")
6.0 m	-	-	-	-	*8,540	*8,540	*9,513	9,513	*9,861	8,880	*10,007	8,858	9.0
(19' 8")	-	-	-	-	*18,825	*18,825	*20,970	*20,970	*21,740	19,575	*22,060	19,530	(29' 6")
4.5 m	-	-	*14,548	*14,548	*11,722	*11,722	*10,620	*10,620	*9,772	*8,716	*11,143	8,329	9.5
(14' 9")	-	-	*32,075	*32,075	*25,840	*25,840	*23,415	*23,415	*21,545	*19,215	*24,565	18,360	(31' 2")
3.0 m	-	-	*18,757	*18,757	*13,628	*13,627	*11,419	11,234	*10,379	8,897	*10,313	8,118	9.7
(9' 10")	-	-	*41,350	*41,350	*30,045	*30,040	*25,175	24,765	*22,880	19,615	*22,735	17,895	(31' 10")
1.5 m	-	-	*22,592	*22,592	*15,937	15,418	*12,752	11,343	*11,029	8,957	*10,456	8,163	9.7
(4' 11")	-	-	*49,805	*49,805	*35,135	33,990	*28,115	25,005	*24,315	19,745	*23,050	17,995	(31' 10")
0 m	-	-	*24,017	*24,017	*17,334	15,576	*13,656	11,442	*11,003	9,021	*10,570	8,414	9.5
(0' 0")	-	-	*52,950	*52,950	*38,215	34,340	*30,105	25,225	*24,255	19,890	*23,305	18,550	(31' 2")
-1.5 m	*15,219	*15,219	*23,763	*23,763	*17,649	15,684	*13,843	11,521	-	-	*11,514	9,114	9.0
(-4' 11")	*33,550	*33,550	*52,390	*52,390	*38,910	34,575	*30,520	25,400	-	-	*25,385	20,095	(29' 6")
-3.0 m	*23,880	*23,880	*22,102	*22,102	*16,727	15,746	*12,799	11,571	-	-	*11,717	10,332	8.2
(-9' 10")	*52,645	*52,645	*48,725	*48,725	*36,875	34,715	*28,215	25,510	-	-	*25,830	22,780	(26' 11")
-4.5 m	*24,910	*24,910	*18,526	*18,526	*13,751	*13,751	-	-	-	-	*11,980	11,440	7.0
(-14' 9")	*54,915	*54,915	*40,840	*40,840	*30,315	*30,315	-	-	-	-	*26,410	25,220	(23' 0")

## Working range EC380E FC with 6.45m Boom & 3.2m Arm and GP Bucket

### Notes

- Lifting capacity at the arm end without attachment
- Machine in "Fine Mode-F" (Power Boost), for lifting capacities.
- The below loads are in compliance with SAE J1097 and ISO 10567 Hydraulic Excavator Lift Capacity Standards
- Rated loads do not exceed 87% of hydraulic lifting capacity or 75% of tipping load.
- Rated loads marked with an asterisk (\*) are limited by hydraulic capacity rather than tipping load.



No.	Description	Unit	Dimension
A	Max. digging reach	mm (ft in)	11,068 (36' 4")
B	Max. digging reach on ground	mm (ft in)	10,858 (35' 7")
C	Max. digging reach	mm (ft in)	7,209 (23' 8")
D	Max. digging depth (8' level)	mm (ft in)	6,877 (22' 7")
E	Max. arm pin height	mm (ft in)	10,523 (34' 6")
F	Arm pin height @ max. dumping	mm (ft in)	7,468 (24' 6")
G	Min. front swing radius	mm (ft in)	4,280 (14' 1")

# NOTES

# NOTES

**V O L V O**